



HONGYE

医养家具图册

HOSPITAL FURNITURE ATLAS

Guangdong Hongye Furniture Group Co., Ltd.
广东鸿业家具集团有限公司

Phone: +86-750-8885898

Websites:

General Furniture: hysdfurniture.com

Hotel Furniture: hyhotelfurniture.com

Office Furniture: hyofficefurniture.com

Educational Furniture: hyeducationfurniture.com

Healthcare Furniture: hyhealthcarefurniture.com

Sintered Stone Furniture: taula.cn

Address:

No.1 Section, Heshan Industrial City, Jiangmen, Guangdong, China

EXPERTS IN SUPPORTING

SOLUTIONS FOR HEALTHCARE SPACE

整体医疗养老空间配套解决方案专家

医疗家具

适老家具



医疗家具 + 适老家具

整体医疗养老空间配套解决方案专家

◆ 广东省著名商标 ◆ 广东省名牌产品 ◆ 国家高新技术企业

Expert in Comprehensive Medical and Elderly Care Space Solutions



HONGYE HOSPITAL FURNITURE
MAINLY REFLECTS THE FUNCTIONAL, HUMANIZED,
safe, healing colors, and conveys positive information to users to reflect "humanistic" care.

鸿业医疗家具主要体现功能化、人性化、安全性、治愈系色彩，向使用者传达积极的信息来体现“人文”关怀。



提供科学·舒适·和谐的医养环境
Provide scientific comfort and harmonious medical environment



ABOUT Hongye / 关于鸿业

Hongye Group is a furniture enterprise with over 30 years of history, founded in Yongkang, Zhejiang, and developed in the China-Europe (Jiangmen) SME International Cooperation Zone - Heshan Industrial City. With a registered capital of 230 million yuan, the company employs over 1,000 people and pays annual taxes exceeding 10 million yuan. It has constructed garden-style factory buildings covering more than 300,000 square meters and built an employee village. The company has received numerous accolades, including Guangdong Province Famous Brand Product, Guangdong Province Famous Trademark, and National High-Tech Enterprise, and has been consistently recognized as a major taxpayer in Heshan City.

Hongye Group is an integrated enterprise encompassing research and development, production, sales, and service for office and hotel furniture. The company uses advanced equipment and environmentally friendly materials, offering a comprehensive product range. Its business operations span over 200 countries and regions worldwide. The company primarily produces six series of furniture: office, hotel, bank, medical and elderly care, educational, and apartment furniture.

The company has obtained various certifications and honors, including ISO system certification, AAA Enterprise Credit Rating, and recognition as a China Industrial Innovation Advanced Enterprise. It has also been designated as the Jiangmen City Smart and Environmentally Friendly Furniture Engineering Technology Research Center and the Guangdong Province Smart and Environmentally Friendly Engineering Technology Research Center. In 2021, Hongye Group invested in the construction of the Laisu Mountain and Water Family Cultural Tourism Project, actively contributing to the development of the Greater Bay Area.



鸿业医养家具
HONGYE
Hospital furniture



前期研究 Previous research

前期研究，深入调研院方现状，并与院方拟定项目任务书及医用家具近、远期设置计划及技术要求。
The previous research went deep into the present condition of hospital. We laid down the project charter and the recent and long-term plan for hospital furniture preparation as well as the technical requirement.

技术设计 Technical design

整体医院建筑、医疗技术设备的配置与技术要求应该在设计的前期就提出。
The configuration and technical requirement of overall architect and medical facilities of the hospital should be presented in the early stage.

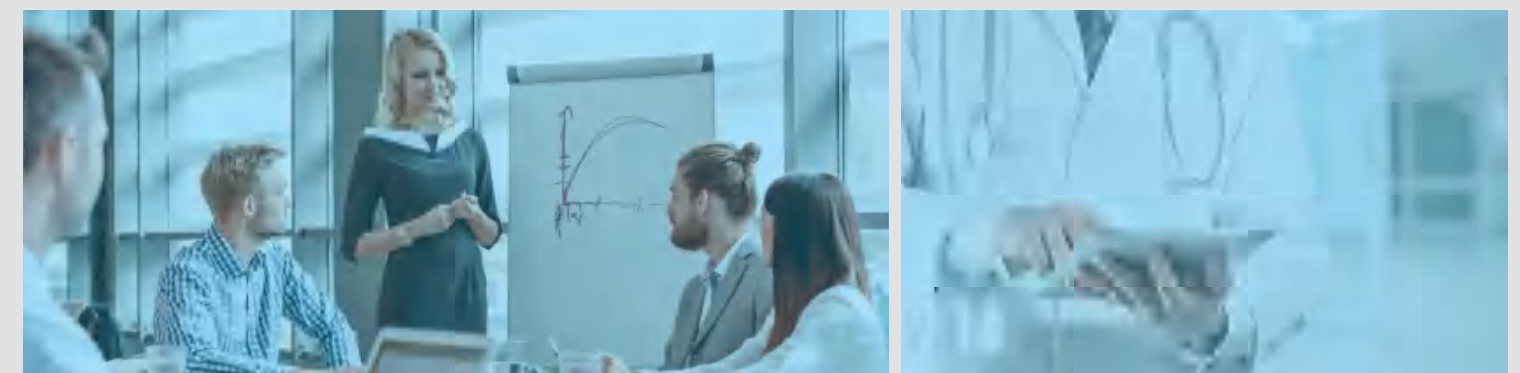
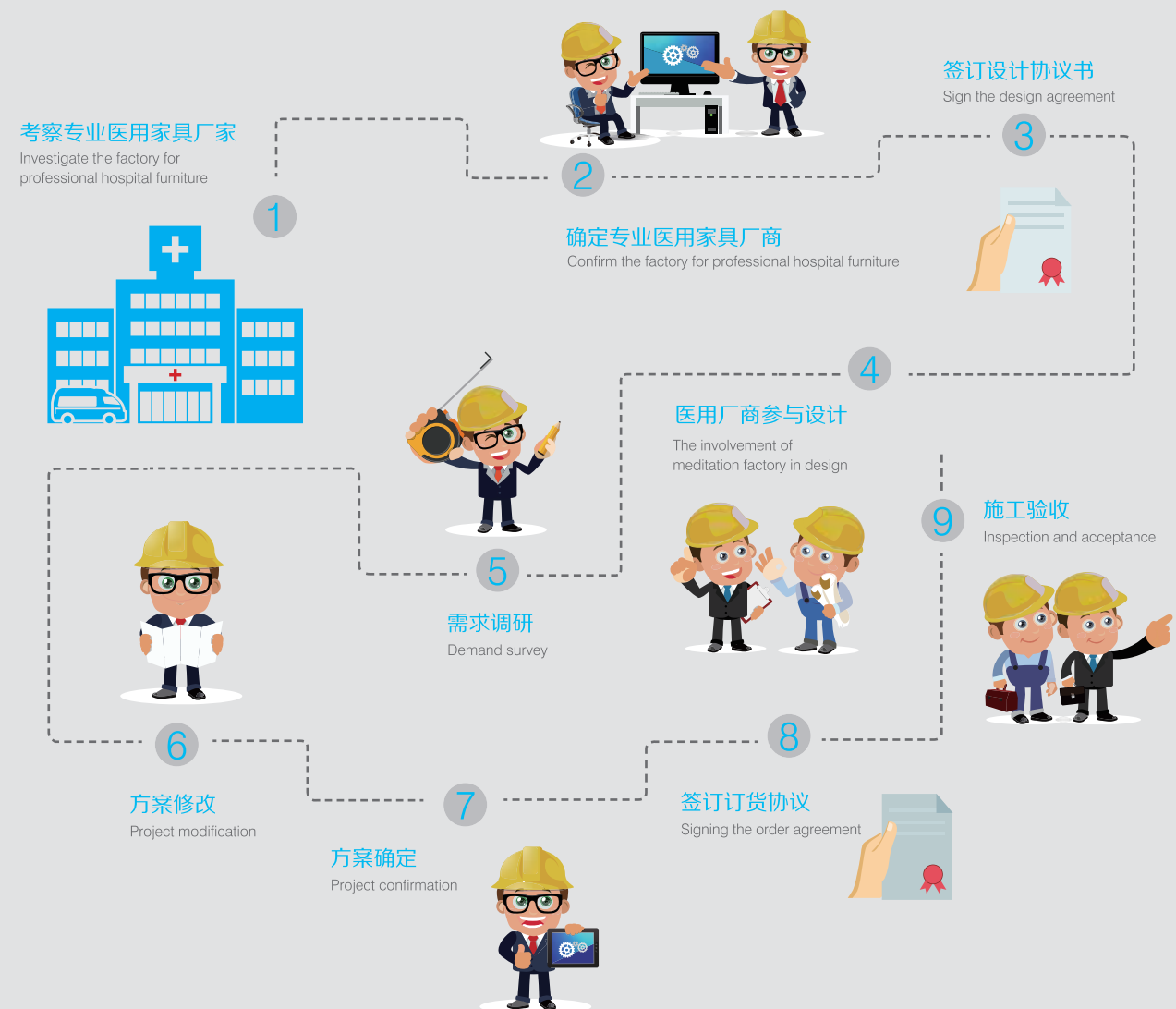
结合室内外环境设计 The design submitting to interior and outdoor design

医疗环境与医疗功能相适应，而设计新颖的医用家具必将成为医院环境中的一个亮点。
The hospital environment should submit to hospital function, the hospital furniture with innovative design must be a highlight of the hospital environment.



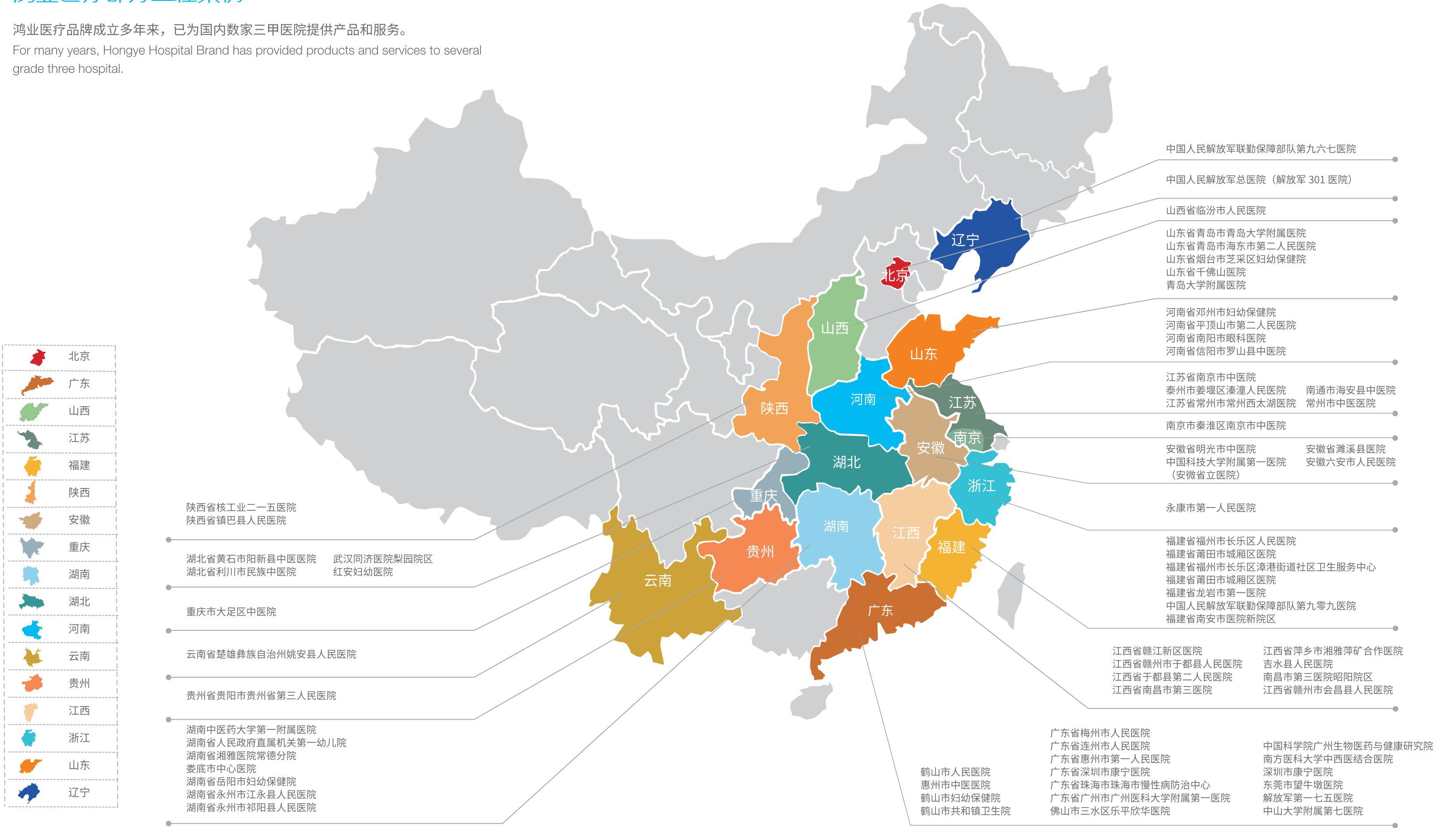
WE PROVIDE PROFESSIONAL ADVICE ACCORDING TO YOUR EXACT REQUIREMENT 针对您的具体要求，我们提供专业建议

医用家具的设计要与整体医疗建筑设计相结合，这是一个复杂、综合性的项目，为此我们制定了以下工作内容：
The design of hospital furniture should match the overall design of hospital architect. This is a complex and comprehensive project. Therefore we formulated the following content:



SOME ENGINEERING
CASES OF HONGYE MEDICAL
鸿业医疗部分工程案例

鸿业医疗品牌成立多年来，已为国内数家三甲医院提供产品和服务。
For many years, Hongye Hospital Brand has provided products and services to several grade three hospital.



Contents

目录

Nurse Station
Ward
Locker Room
Infusion Room
Treatment Room
Disposal Room
Baby Bathing Room
Medicine Cabinet

住院部
INPATIENT DEPARTMENT

Administrative Office
Multimedia Consultation Room

行政中心
ADMINISTRATIVE CENTER

Lobby public area
Residential function
Dining facilities
Entertainment function
Medical care

适老家具
PENSION FURNITURE

门急诊部
OUTPATIENT AND EMERGENCY UNIT

医技部
TECHNOLOGY DEPARTMENT

通用产品
UNIVERSAL PRODUCT

Lobby Information Desk
Waiting Area
Infusion Area
Reception and Guidance Desk
Outpatient Department
Traditional Chinese Medicine Treatment Room

Blood Drawing Area
Laboratory Department
Color Ultrasound/B-Ultrasound

Garbage Cabinet
Central Sterile Supply Department (CSSD)

Heshan City Top Taxpayer for Ten Consecutive Years

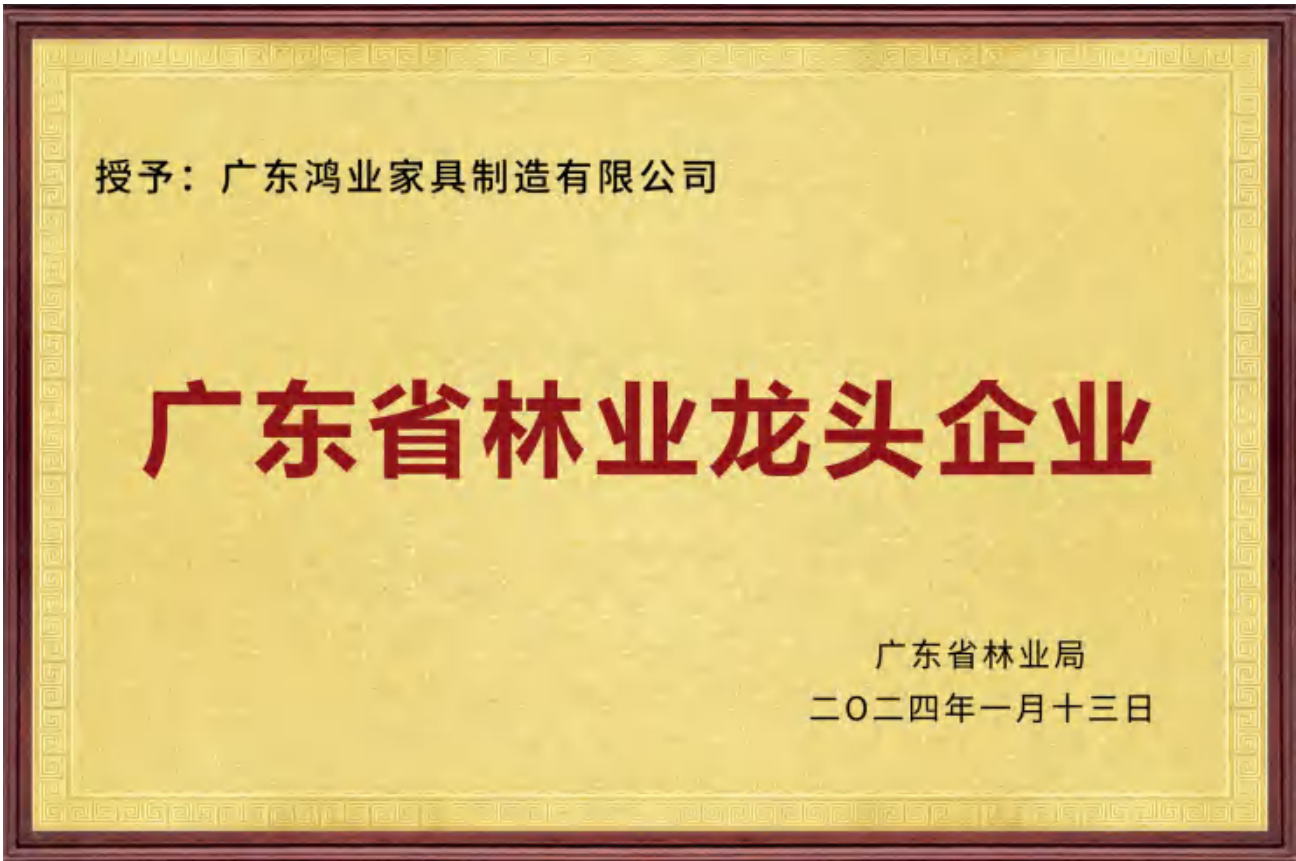


鸿业家具营业执照



纳税大户

Leading Enterprise Honor Certificate



广东省林业龙头企业



广东省名牌产品



广东省著名商标



中国医疗家具十大品牌



国家高新技术企业



商标注册证



鸿业盛大商标注册



安全生产标准化证书



质量管理体系认证书

专注医院 Focus on the hospital
适老家具 Pension furniture
整体配套 Integral fom a completeset of
工程投标 Engineeringhng bidding



人类工效学证书－办公桌



人类工效学证书－办公椅



FSC 森林认证



采用国际标准产品标志证书



环境管理体系认证书



职业健康安全管理体系认证书



中国环境标志产品认证



ISO14025 环境标志产品认证



绿色供应链评价证书四星



年度纳税信用 A 级纳税人



CQTA 系列产品品质认证



中国环保产品认证



广东省采用国际标准证书



标准良好行为 AAAA 证书



外观设计专利证书



守合同重信用



AAA 级企业信用等级证书



广东省家具协会会员



实用新型专利证书



售后服务五星



二类医疗器械证书



CQC 金属医疗证书



CQC 木质医疗证书



门急诊部

OUTPATIENT AND EMERGENCY UNIT

→ 大堂咨询台 Lobby Information Desk

→ 等候区 Waiting area

→ 输液区 Transfusion room

→ 导诊台 Reception

→ 门诊 outpatient service

→ 中医理疗室 TCM area

part

门诊采用“一卡通”预交费模式，诊室直接挂号就诊，诊室直接扣取费用；门诊药房采用后台摆系统，检验结果报告采取自助服务系统，通过大屏与短信平台提示，实现自主查询和打印，缩短了病人取报告的时间。

The clinic applied one-card system in prepayment mode. The clinic allows direct registration for consultation, and can deduct the cost of treatment directly. The drug storehouse applied background system which allows self-help inquiry of inspection result. With the reminder through big screen and message platform, it realized self-help inquiry and printing which reduces the time to get the report.

COMPREHENSIVE SERVICE TABLE

综合服务台

- Main Body: E1 grade solid wood multi-layer board + wood veneer, thickness 100mm, with high-density MDF + wood veneer for the inner cabinet.
- Marble Countertop: Made of 12.7mm medical-grade artificial marble (composite acrylic resin ≥28% + aluminum), with 12mm medical composite acrylic on the outer side and wood veneer on the inner side.
- Rails: Professional-grade medical rails with smooth, silent, and anti-tilt features.
- Base: E1 grade solid wood multi-layer board fully wrapped with 1.0mm thick 304 brushed stainless steel (folded edges).
- Function: Hidden design for strong and weak electrical wiring.
- Surface Treatment: Odorless and environmentally friendly paint.



型号：YL-A1018 综合服务台 尺寸：4200×760/1150mm Reception Desk



- 打印机抽面
Operation of printer
放置打印机，带滑轨，可拉出
Place the printer, it has guide raid for pulling out
- 查询机
Inquiry machine
具有导览和查询功能
With guiding and inquiry function
- 制卡机
Card creator machine
制作一卡通
Creating medical card
- 票据格
Shelf for notes
存放纸张和票据
Store papers and notes



YL-A1003 Reception Desk

- Main Body: E1 grade solid wood multi-layer board + wood veneer, thickness 100mm, with high-density MDF + wood veneer for the inner cabinet.
- Marble Countertop: Made of 12.7mm medical-grade artificial marble (composite acrylic resin ≥28% + aluminum), with 12mm medical composite acrylic on the outer side and wood veneer on the inner side.
- Rails: Professional-grade medical rails with smooth, silent, and anti-tilt features.
- Base: E1 grade solid wood multi-layer board fully wrapped with 1.0mm thick 304 brushed stainless steel (folded edges).
- Function: Hidden design for strong and weak electrical wiring.
- Surface Treatment: Odorless and environmentally friendly paint.





LOBBY WAITING AREA 等候区

现代化智能医院“以病人为中心”，以临床为核心，以医嘱为主线；根植于数字化医院建设全过程；贯穿于数字化医院建设的各个环节；用最优化的流程，最便捷的服务营造病人方便、放心、满意的就医环境；整体规划，科学统筹。

The modern intelligent hospital is patient-centered, its clinic experience and doctor advises are principal. These has become the basis of the construction of intelligent hospital and covers each procedure of the construction. We creates the medical environment that makes the patients convenient assured and satisfied with the optimized procedure and the most convenient service. We make the overall plan in a scientific way.

Waiting Chair

YL-C2401 等候椅 1(灰白色)
1750×680×770mm

- Aluminum alloy legs + PU self-skinning seat and backrest + high-quality steel frame and armrests + oversized door beam



YL-C2402 等候椅 2(银灰色)
1750×680×770mm

- High-quality steel armrest legs + high-quality steel mesh panel + oversized door beam



YL-C2403 等候椅 3(墨绿色)
1750×680×770mm

- Legs made of aluminum alloy with nano paint + high-quality steel mesh panel + medical-grade leather for seat and backrest + high-quality eco-friendly foam



YL-C2404 等候椅 4(草绿色)
1740×676×950mm

- Legs made of aluminum alloy with nano paint + high-quality steel mesh panel + medical-grade leather for seat and backrest + high-quality eco-friendly foam



YL-C2405 等候椅 5(草绿色)
1740×676×950mm

- Legs made of aluminum alloy with nano paint + high-quality steel mesh panel + medical-grade leather for seat and backrest + high-quality eco-friendly foam



YL-C2406 等候椅 6(黑色)
1740×676×950mm

- High-quality steel armrest legs / Polyurethane foam seat cushion



YL-C2407 等候椅 7(蓝色)
2250×676×950mm

- High-quality steel armrest legs / Polyurethane foam seat cushion





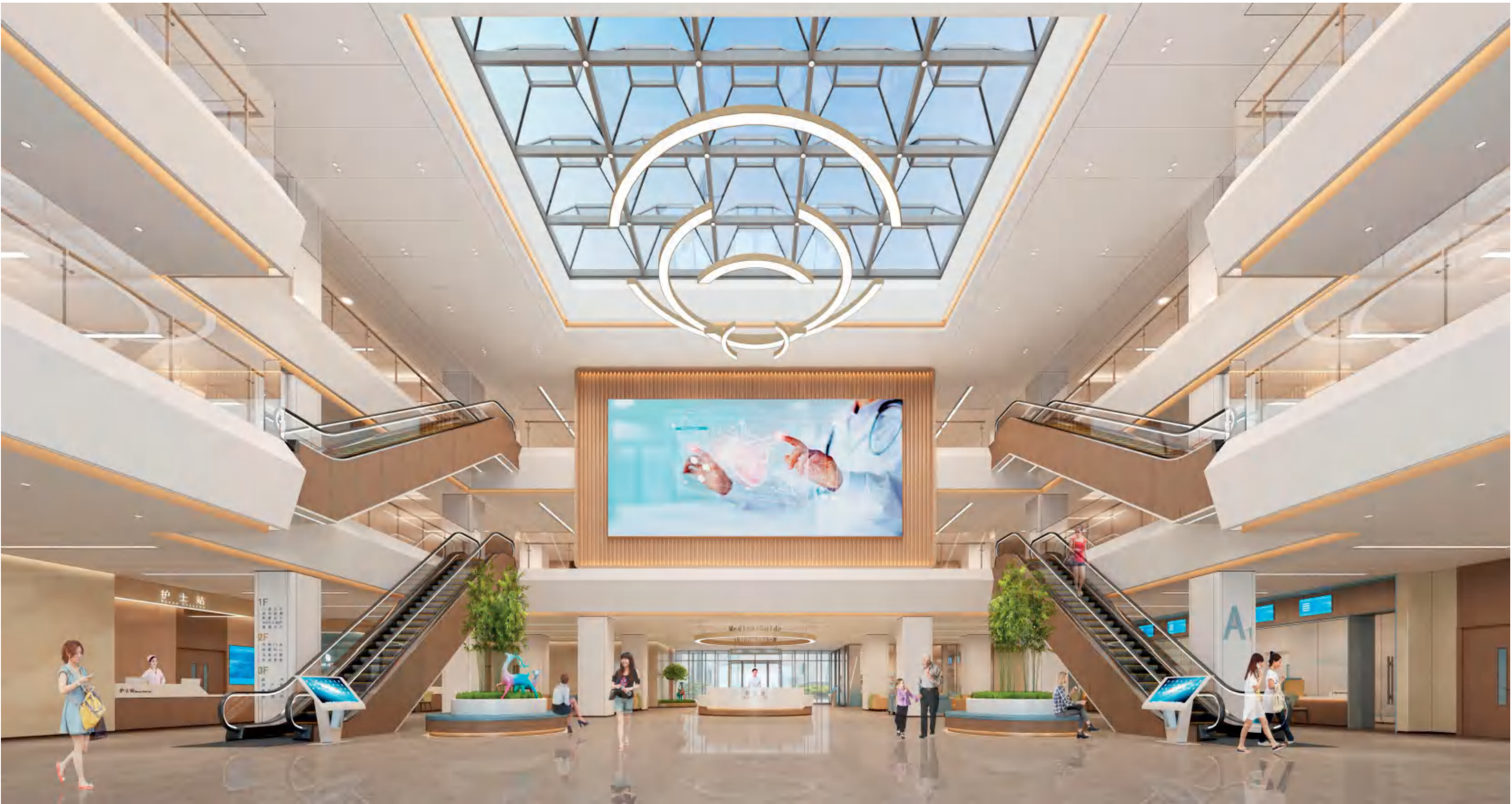
型号: YL-C2503 单人位输液椅 3 Single-seat Infusion Chair

脚架为铝合金喷纳米漆 + 优质钢铁网板 + 坐背专用
医用皮革 + 优质环保海绵

- Aluminum alloy legs with nano paint + high-quality
steel mesh panel + medical-grade leather for seat
and backrest + high-quality eco-friendly foam

TRANSFUSION ROOM / 输液室

输液区需设置信息呼叫系统, 减轻护士劳动强度和患者输液安全。
The transfusion area should be equipped with calling system, reducing the
work load of nurses while ensuring the security of patient.



YL-A1004 导诊台 4 Reception Desk

- 1、柜体：电解钢板，钢板厚度 $\geq 1.0\text{mm}$ ；主体钢结构，采用 2.0mm 电解钢板和 2.0mm 钢管结合构造，柜门与抽屉采用隐藏式拉手，折弯一体成型；
- 2、大理石台面：复合亚克力树脂 $\geq 28\%$ 铝粉，易清洁、耐高温、耐冲击、抗污垢；
- 3、导轨：采用专业级医用导轨，具有顺畅，静音，防倾覆功能；
- 4、表面工艺：采用静电环氧树脂粉末喷涂，304 不锈钢踢脚线。

- 1. Cabinet Body: Made of electrolytic steel plate with a thickness of $\geq 1.0\text{mm}$; main steel structure combines 2.0mm electrolytic steel plate and 2.0mm steel tube. The cabinet doors and drawers feature concealed handles and are integrally formed by bending.
- 2. Marble Countertop: Composed of composite acrylic resin ($\geq 28\%$) and aluminum powder, making it easy to clean, heat-resistant, impact-resistant, and stain-resistant.
- 3. Rails: Uses professional-grade medical rails that are smooth, silent, and have anti-tilt functionality.
- 4. Surface Treatment: Coated with electrostatic epoxy resin powder and features a 304 stainless steel kickplate.



Model: YL-A1005 Nurse Station

1. Main Body: Made of E1 grade multi-layer solid wood board with wood veneer, thickness 100mm. The inner cabinet uses high-density MDF with wood veneer.
2. Marble Countertop: Made of 12.7mm medical-grade artificial marble (composite acrylic resin $\geq 28\%$ + aluminum), with a 12mm medical composite acrylic outer surface and wood veneer on the inner surface.
3. Rails: Uses professional-grade medical rails that are smooth, silent, and have anti-tilt functionality.
4. Base: E1 grade multi-layer solid wood board fully wrapped with 1.0mm thick 304 brushed stainless steel (with folded edges).
5. Functionality: Features a concealed design for strong and weak electrical wiring.
6. Surface Treatment: Uses odorless, environmentally friendly paint.



GUIDE RECEPTION 导诊台

Model: YL-A1006 Reception Desk 6

1. Main Body: Constructed from E1 grade multi-layer solid wood board with wood veneer, thickness 100mm. The inner cabinet is made of high-density MDF with wood veneer.
2. Marble Countertop: Made from 12.7mm medical-grade artificial marble (composite acrylic resin $\geq 28\%$ + aluminum), with a 12mm medical composite acrylic outer surface and wood veneer on the inner surface.
3. Rails: Equipped with professional-grade medical rails that ensure smooth, silent operation and have anti-tilt functionality.
4. Base: E1 grade multi-layer solid wood board fully wrapped with 1.0mm thick 304 brushed stainless steel (with folded edges).
5. Functionality: Features a concealed design for strong and weak electrical wiring.
6. Surface Treatment: Finished with odorless, environmentally friendly paint.





DOUBLE ROOM 双人诊室



鸿业医疗家具
HONGYE
Hospital furniture

**SINGLE
CONSULTATION
ROOM / 普通诊室 1**



CHECK ROOM 检查室

• Hange Hospital Furniture



1. YL-D3107 Consultation Table with Screen: 2400mm (Length) x 1800mm (Width) x 750mm/1600mm (Height)
2. YL-E4016 Examination Bed: 2000mm (Length) x 600mm (Width) x 660mm (Height)
3. YL-B1121 Wardrobe: 800mm (Width) x 500mm (Depth) x 2000mm (Height)
4. YL-B1206 Wash Basin Cabinet: 800mm (Width) x 600mm (Depth) x 750mm (Height)

- ◆ 型号: YL-D3107 诊疗桌带屏风 尺寸: 2400×1800×750/1600mm
- ◆ 型号: YL-E4016 诊床 尺寸: 2000×600×660mm
- ◆ 型号: YL-B1121 衣柜 尺寸: 800×500×2000mm
- ◆ 型号: YL-B1206 洗手柜 尺寸: 800×600×750mm

GYNECOLOGY CLINIC

Model: YL-D3111 Consulting table
Dimensions: 1600×1500×750/1000mm

Model: YL-E4014 Examination bed
Dimensions: 2000×600×550mm

Model: YL-B1124 Wardrobe

Dimensions: 800×500×2000mm

Model: YL-B1209 Washing cabinet

Dimensions: 600×600×800mm



DOUBLE ROOM /



YL-D3108 Consulting table
3380×2025×750/1200mm



YL-E4012 Examination bed
2000×800×650mm



Leather sofa
1850×800×800mm



YL-B1122 Combination cabinet (wardrobe + wash cabinet) 1800×600×2000mm



HY-TB2977 Chair for doctor

SINGLE CONSULTATION ROOM /



YL-D3110 Consulting table
1600 x 1500 x 750mm



YL-E4013 Examination bed
1900 x 600 x 650mm



YL-E4013 Consulting chair
(regular)



HY-TB2914 Chair for doctor

SINGLE CONSULTATION ROOM /



YL-D3109 Consulting table
600×1500×750/850mm



YL-E4011 Examination bed
2000×600×650mm



Leather sofa
1850×800×800mm



YL-B1123 Wardrobe
800×600×2000mm



YL-B1207 Washing cabinet
1500×600×750mm



YL-B1207 Wall cabinet
500×300×800mm



HY-TB2914 Chair for doctor



YL-C2310 Consultation chair 10

CHECK ROOM /



YL-D3107 Consulting table with screen
2400×1800×750/1600mm



YL-E4016 Screen 2000×600×1600mm
Examination bed 2000×600×660mm



YL-B1206 Washing cabinet
800×600×750mm



YL-B1121 Wardrobe
800×500×2000mm



HY-TB2914 Chair for doctor



YL-C2310 Consultation chair 10

GYNECOLOGY CLINIC /



YL-D3111 Consulting table
1600×1500×750/1000mm



YL-E4011 Examination bed
2000×600×550mm



Leather sofa
1300×700×700mm



YL-C2312 Examination chair 12



YL-B1124 Wardrobe
800×500×2000mm



YL-B1209 Washing cabinet
600×600×800mm



HY-TB2914 Chair for doctor

DENTAL CLINIC





YL-D3112 Consulting table
1800x900x750mm



YL-B1134 Wardrobe
1200x360x2000mm



Screen 2500x2000mm



YL-S3126 Multi-person sofa
2000x780x720mm



YL-E4015 Examination bed
1900x800x750mm



YL-C2623 Chair
690x600x830mm



YL-C2307 Flower stand
500x450mm



TCM AREA

TCM applies traditional Chinese medical method to cure the patients.



住院部 INPATIENT DEPARTMENT

- 护士站 Nurse station
- 病房 Ward
- 更衣室 Changing room
- 配液室 Dosing room
- 治疗室 Treatment room
- 处置室 Disposing room
- 婴儿洗澡间 Baby shower rooms



In order to meet different medical space demands, we provide various form of nurse station such as arc shape and rectangle shape with round corner in addition to the classical semi or orthogonal nurse station. these provide fine solution for space with different proportion andshape.



Model: YL-A1007 Nurse Station 7
Dimensions: 5280x2778x760/1100mm



NURSE STATION

- Model: YL-A1009 Nurse Station 9
- 1. Main Body:Material: E1-grade multi-layer solid wood board + wood veneer. Thickness: 100mm.Inner Cabinet: High-density MDF (medium-density fiberboard) + wood veneer.
 - 2. Marble Countertop:Material: 12.7mm medical-grade artificial marble (composite acrylic resin 28% + aluminum).Outer Surface: 12mm medical composite acrylic.Inner Surface: Wood veneer.
 - 3. Rails:Professional-grade medical rails with smooth, silent operation and anti-tilt functionality.
 - 4. Base:Material: E1-grade multi-layer solid wood board, fully wrapped in 1.0mm thick 304 brushed stainless steel (with edge folding).
 - 5. Function:Concealed power and data cable routing design (for both strong and weak electrical currents).
 - 6. Surface Treatment:Odorless and eco-friendly paint.



WARD

"Starting with demand" is the major strategy in the future design of medical furniture.



- ◆ Model: YL-E4121 Manual double-crank central control nursing bed
Dimensions: 2160×1040×500mm Back adjustment 85°±5°, leg adjustment 45°±5°
- ◆ Model: YL-D3301 Mobile Dining Table
Dimensions: 900 × 450 × 720-1020mm
1. Tabletop: Blow-molded PP plastic
2. Column: Aluminum profile, electrostatic sprayed, oxidized
3. Base Frame: Cold-rolled steel, rust-removed, electrostatic sprayed
4. Feet: Locking dual-bearing rubber casters, pneumatic height adjustment
5. Materials: PP, steel base (60mm), gas rod (70 × 90mm) Height: Adjustable (720-1020mm) Max Load: 16kg
- ◆ Model: YL-B1303 Bedside Cabinet
Dimensions: 500 × 400 × 450mm
1. Main Body: High-quality wood grain E1-grade melamine board. Edged with 2.0mm premium PVC edge banding, sealed by automatic edge banding machine.
2. Rails: Professional-grade medical rails for smooth, silent, and anti-tilt operation.
- ◆ Model: YL-G6002 TV Cabinet

DELUXE SUITE WARD

豪华套间病房



Model: YL-E4251 Multifunctional electric nursing bed
Dimensions: 2130×1030×760/460mm



Model: YL-B1302 Bedside table
Dimensions: 500×400×450mm



Model: YL--S3101 Single sofa
Dimensions: 700×780×900mm



Model: YL--S3102 Three-seater sofa
Dimensions: 2000×780×820mm



Model: YL-F5001 Long coffee table
Dimensions: 1100×600×450mm



Model: YL-G6001 TV cabinet
Dimensions: 1800×400×600mm





◆ Model: YL-E4122 Manual double-crank central control nursing bed
Dimensions: 2160×980×500mm
Back adjustment 85°±5°, leg adjustment 45°±5°



Model: YL-B1603 Bedside Cabinet
Dimensions: 400 × 500 × 620mm
1. Cabinet Body: Made of electrolytic steel plate (thickness 1.0mm).
2. Main structure combines 2.0mm electrolytic steel plate and 2.0mm steel pipe.
3. Cabinet door and drawer feature hidden handles, formed by integrated bending.
4. Hinges: Hydraulic soft-closing mechanism.
5. Surface Treatment: Electrostatic epoxy resin powder coating.



Model: YL-E4123 Manual double-crank central control nursing bed
Dimensions: 2160×980×500mm
Back adjustment 85°±5°, leg adjustment 45°±5°

Model: YL-D3302 Mobile Dining Table 2
Tabletop: 800 × 400 × 20mm, solid wood with raised edges.
Height: Adjustable (630~930mm) via pneumatic lift with ergonomic handle.
Frame: Durable, rust-proof aluminum alloy.
Legs: "H"-shaped design with 360° silent casters for easy mobility.

FIVES FUNCTIONS

ELECTRIC BED



Product name: Three-function electric nursing bed
Model: YL-E4231
Length/L: 2220mm
Width/W: 1040mm
Height/H: 460-700mm

Product function

1. Back adjustment $70^{\circ} \pm 5^{\circ}$, leg adjustment $40^{\circ} \pm 5^{\circ}$
2. Whole bed lifting 460-700mm



Product name: Manual double-crank central control nursing bed
Model: YL-E4124
Dimensions: 2130×980×500mm



Product name: Manual double-crank nursing bed
Model: YL-E4125
Dimensions: 2160×980×500mm



Product name: Manual three-crank central control nursing bed
Model: YL-E4131
Dimensions: 2160×980×(480-720)mm



Product name: Manual three-crank central control nursing bed
Model: YL-E4132
Dimensions: 2260×1080×(480-720)mm



Product name: Multifunctional electric nursing bed
Model: YL-E4252
Dimensions: 2260×1080×(480-720)mm



Product name: Three-function electric nursing bed
Model: YL-E4232
Dimensions: 2160×1040×(480-720)mm

PATIENT

ACCOMPANYING FURNITURE



Nursing bed(Chair)has storage function as well as online payment. It saves the human resources, storage space and operating space for the hospital. It is safe, comfortable and convenient, suitable for ward and corridor.



Model: YL-PH9002 Folding Nursing Bed 2
Dimensions: 900×100×1000mm



Model: YL-PH9003 Functional Sofa 3
Dimensions: 1100×800×900mm

Model: YL-PH9004 Functional Sofa 4
Dimensions: 2300×860×900mm



Model: YL-PH9001 Folding Chair 1
Size: 700×720×1900mm
Material: Carbon steel spray-coated chair body, waterproof and wear-resistant cloth, high-density polyester-cotton inner core.



Model: YL-PH9005 Functional Chair 5



Model: YL-PH9006 Functional Chair 6



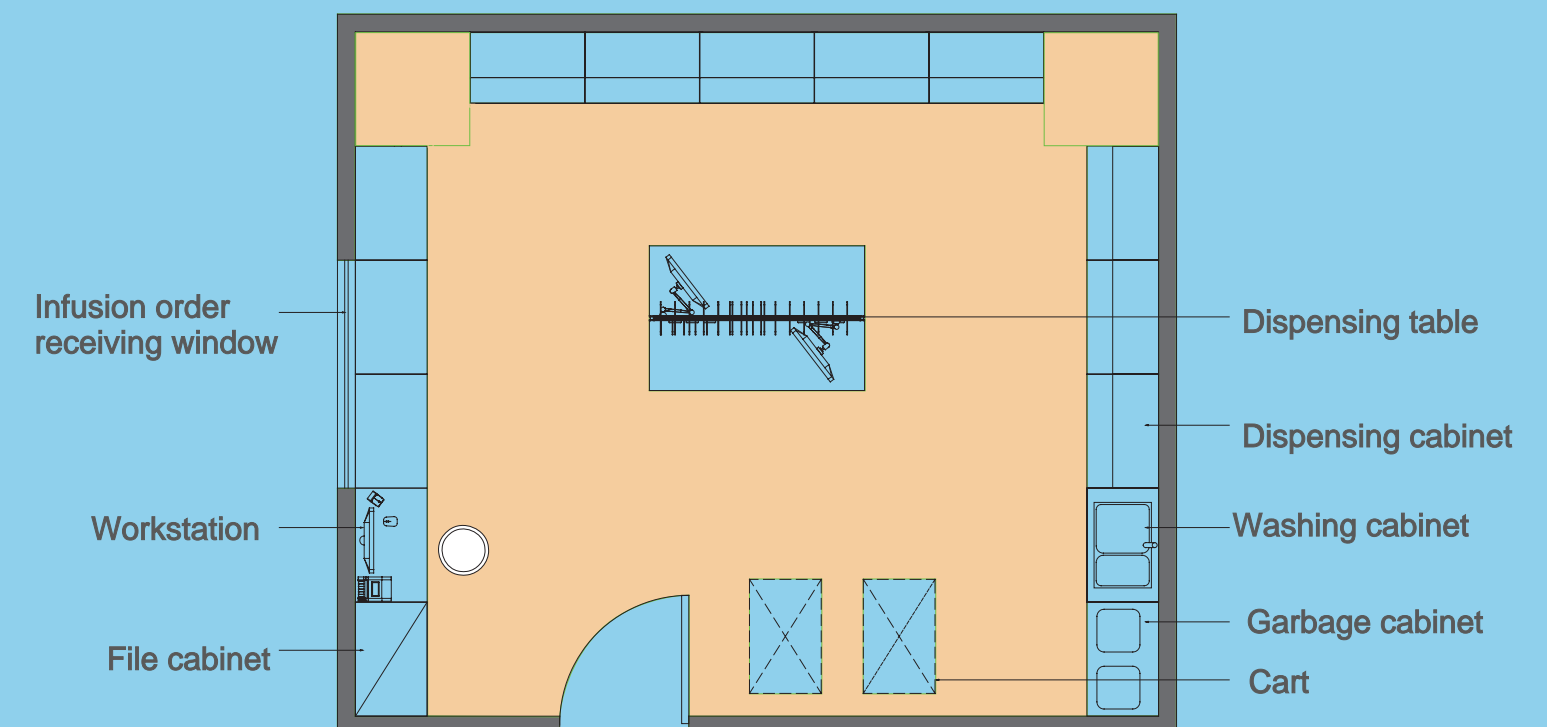
LOCKER ROOM

Model: YL-B1408 Dimensions of three-door wardrobe and three-shoe cabinet: 900x450x1800mm
Model: YL-B1409 Dimensions of three-door wardrobe: 900x450x1800mm
Model: YL-B1410 Dimensions of six-door wardrobe and six-shoe cabinet: 900x450x1800mm
Model: YL-B1411 Dimensions of six-door wardrobe: 900x450x1800mm
Model: YL-B1412 Dimensions of three-door shoe bench (including soft bag): 980x400x450mm



The dispensing room is used for dispensing the infusion solution of wards, therefore it should be set near the nursing station. The room should be equipped with auxiliary cart for dispensing drug and medicine. External medicine and machine should be prepared. As the room requires cleanness, it can be sterilized with ultraviolet and other method. A cleaned table for dispensing should be set if possible.

Plane graph of dispensing room





DISPENSING ROOM

- 1.Material: 1.0mm thick premium electrolytic steel – waterproof, moisture-proof, and durable.
- 2.Coating: Antibacterial powder coating – resists E. coli, Staphylococcus aureus, and more.
- 3.Colors: Multiple options available.
- 4.Countertop: 12.7mm composite acrylic artificial stone.
- 5.Kickboard: 304 food-grade stainless steel.
- 6.Accessories: Stainless steel U-shaped, concealed, or integrated handles; soft-close damped hinges; adjustable shelves in upper and middle sections. Options for acrylic backsplash, trash bin, stainless steel sink, and sensor faucet.
- 7.Finish: Imported antibacterial powder electrostatic spray.



Strong the various medicine orderly with labels according to the requirement of hospital. Make the usage of medicine convenient and reasonable, avoid wrong usage.

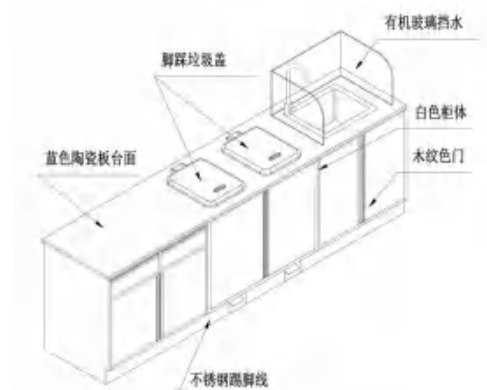


CHANGE MEDICINE ROOM

- 1.Cabinet: 1.0mm thick premium electrolytic steel – waterproof, moisture-proof, and durable.
- 2.Coating: Antibacterial powder coating – resists E. coli, Staphylococcus aureus, and more.
- 3.Hardware: Integrated concealed handles, lab-grade hinges.
- 4.Colors: Various options available.
- 5.Countertop: 12.7mm composite acrylic artificial stone.
- 6.Kickboard: 304 food-grade stainless steel.



DISPOSING ROOM



- 1.Material: 1.0mm thick premium electrolytic steel – waterproof, moisture-proof, and durable.
- 2.Accessories: Stainless steel U-shaped, concealed, or integrated handles; soft-close damped hinges; adjustable shelves in the upper and middle sections. Optional acrylic splash guards, trash bins, stainless steel sink, and sensor faucets.
- 3.Finish: Imported antibacterial powder electrostatic spray on metal surfaces.



婴儿洗澡间 Baby shower rooms

Model:YL-B1501 Bathtub Cabinet
Size:960x580x800mm

1. **Cabinet:** electrolytic steel plate, steel plate thickness>1.0mm; main steel structure, using 2.0mm electrolytic steel plate and 2.0mm steel pipe combination structure, cabinet door and drawer use hidden handles, bent into one piece;
2. **Guide rail:** using professional-grade medical guide rail, with smooth, silent, anti-overturning function, Door hinge: hydraulic buffer;
3. **Surface Process:** using electrostatic epoxy resin powder spraying;
4. **Baseboard:** 304 brushed stainless steel (folded edge);

药品柜 Medicine cabinet



Model:YL-A2001
Medicine Cabinet 1



Model:YL-A2002
Medicine Cabinet 2



Model:YL-A2003
Medicine Cabinet 3



Model:YL-A2004
Medicine Cabinet 4



Model:YL-A2005
Medicine Cabinet 5



Model:YL-A2006
Medicine Cabinet 6



Model:YL-A2007
Medicine Cabinet 7



Model:YL-A2008
Medicine Cabinet 8



Model:YL-A2009
Medicine Cabinet 9



BLOOD TEST COUNTER

/ 抽血化验柜台

Model:YL-A1012 Infusion Table 12

- 1.Cabinet body: electrolytic steel plate, steel plate thickness > 1.0mm; the main steel structure, using 2.0mm electrolytic steel plate and 2.0mm steel pipe combined structure, cabinet doors and drawers with hidden handles, bending one-piece molding.

2.Guide rail: the use of professional-grade medical guide rail, with smooth, mute, anti-tipping function.

3.Surface technology: electrostatic epoxy resin powder coating.

4.Skirting: Food grade 304 stainless steel skirting.



Model:YL-C2403 Waiting Chair 3

The tripod is aluminum alloy spray nano paint + high quality steel mesh plate + seat back special medical leather + high quality environmental protection sponge



HONGYE

Hospital furniture

BLOOD DRAW AREA 抽血区

采血室是抽出病人血液以用于检查化验的场所。此空间应控制相对清洁，需注意候诊区域人流的控制。通常设计为柜台模式，抽血患者需设置座位。

Blood drawing room is the place for drawing blood for inspection. This space should be made extremely clean. The patient flow of its waiting area should be controlled. It is usually designed in counter mode. There should be seats for the patients.

Model:YL-S3103

High-grade Waiting Sofa

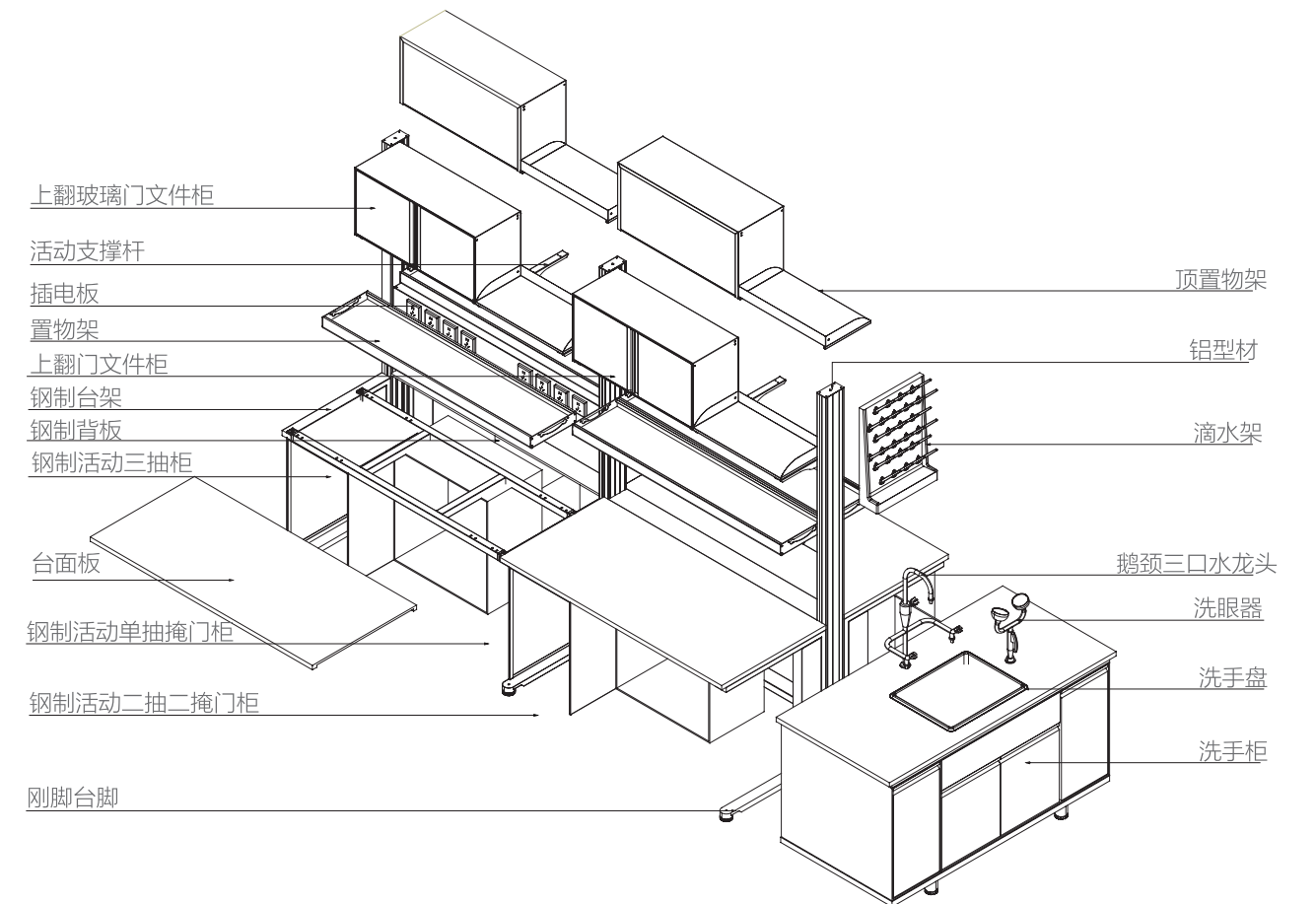


AERIAL VIEW OF INSPECTION PLATFORM / 检验台鸟瞰图



1. **Tabletop:** 12.7mm solid physical and chemical board, edge thickened to 25.4mm.
2. **Cabinet frame:** Made of high-quality C-shaped rectangular steel pipe, surface electrostatic powder is not sprayed, acid and alkali resistant and corrosion resistant.
3. **Cabinet body:** 15mm environmentally friendly E1 grade medium fiberboard 2.0mmPVC edge sealing.
4. **Hardware accessories:** one-word hidden handle, laboratory special hinge, three-section load-bearing silent slide rail.
5. PP basin, three-pronged faucet, PVC water supply and drainage pipe, reagent rack are charged separately.

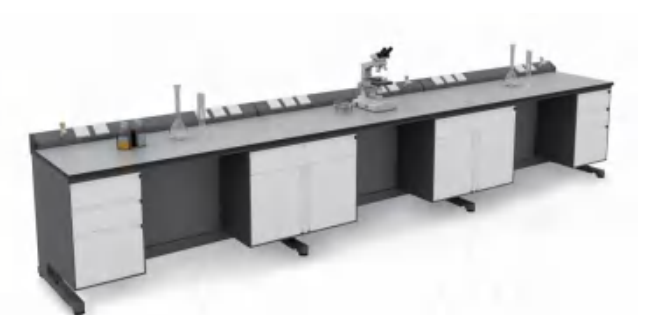
+ Hongye Hospital Furniture



LABORATORY / 实验室

检验科应合理安排检验项目的检测时间和提高工作效率，尽量缩短检验报告时间、提高检验快速反应性尤其是急诊标本的检验。

The laboratory department should arrange the inspecting time of the projects and ensure efficiency. It should try to reduce the time to get the report and response fast during the process, especially for the inspection of emergency case.





RADIOLOGY DEPARTMENT

彩超 /B 超室

放射科是医院重要的辅助检查科室，在现代医院建设中，放射科是一个集检查、诊断、治疗于一体的科室，临床各科许多疾病都须通过放射科设备检查达到明确诊断和辅助诊断。

The radiology department is an important auxiliary department for inspection. In the construction of modern hospital, the radiology department is department inspection, diagnosing and therapy. many clinical diseases can realize accurate and auxiliary diagnosis by inspecting with the facilities of the radiology department.



Model: YL-B1138
Combination Office Desk
Size: 1200x1200x750mm

1. Adopt E1 grade particle board, bamboo wood texture melamine paper veneer high-quality PVC edge banding, the board surface color is uniform, the texture is natural, and the splicing is tight.
2. Hardware accessories: high-quality brand hardware accessories.
3. With steel frame.

Model: YL-B1133 Low File
Cabinet Size: 800x400x2000mm

1. Adopt E1 grade particle board, bamboo wood texture melamine paper veneer high-quality PVC edge banding, the board surface color is uniform, the texture is natural, and the splicing is tight.
2. Hardware accessories: high-quality brand-name hardware accessories

Model: YL-C2220
Middle Class Chair 20

High-quality mesh fabric, using 55# or higher high-density flame-retardant sponge, with an anti-aging protective film on the surface to prevent oxidation, moderate hardness and softness, no deformation and good rebound performance; with lifting and no noise, flexible and light steering, PU armrests, and high-quality five-star feet.



MULTIMEDIA

CONSULTATION ROOM

/ 多媒体会诊室



建立物品账本，每季清点一次，及时做好登记，做到账物相符，定期维护。对消耗的一次性物品及时补充，保证会诊、训练、考核正常进行。
Establish a book of articles, check once every quarter, and register in time to ensure that the accounts are consistent and regularly maintained. Timely replenishment of disposable items consumed to ensure normal teaching, training, and assessment.



Doctors' Meeting Room
-YL-S3117 Sofa
-Video display
-YL-C2210 Mid-shift chair 10

多媒体会诊室是通过网络和互联网进行相互交流,培训教学、医学研究、学术交流和手术会诊等的主要场所。
The demonstrate classroom is the major place for communication, training, medical research, academic exchange and surgery consultation through internet.





+ Hongye Hospital Furniture

MULTIMEDIA CONSULTATION ROOM / 多媒体会诊室

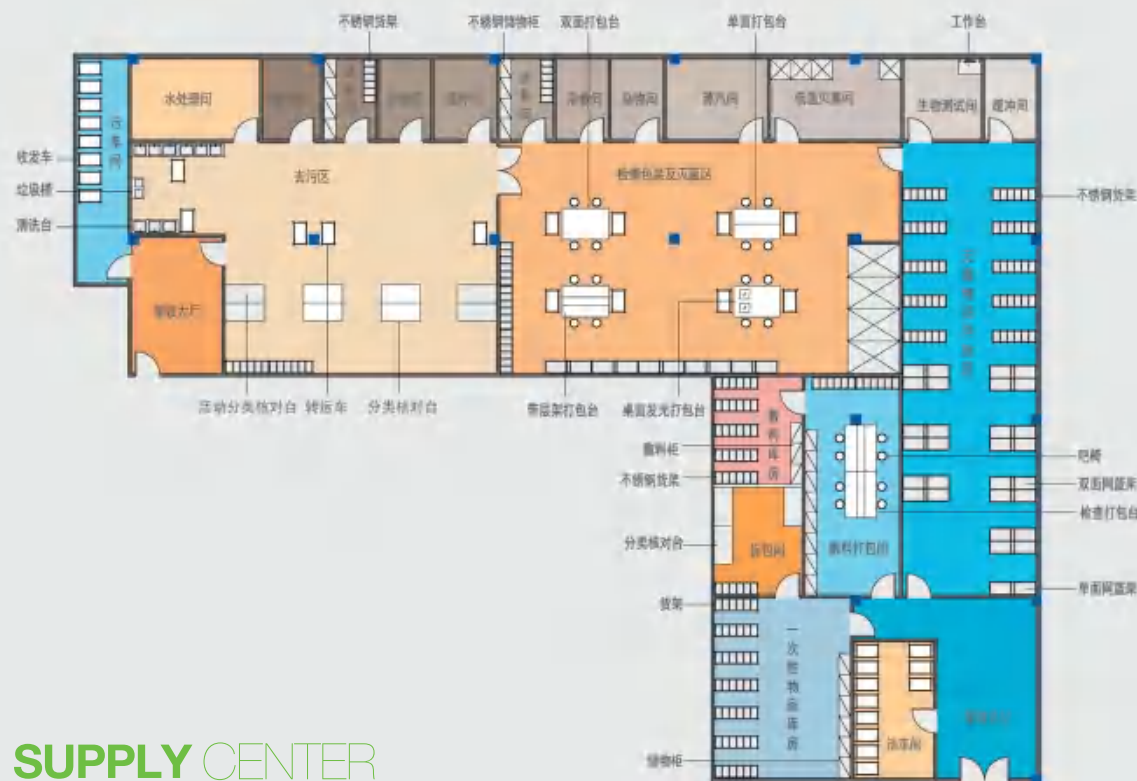
Base material: multi-layer plywood with ash veneer, 0.6mm thick walnut veneer, clear and natural texture; paint: odorless environmentally friendly paint.

Frame: steel frame, surface: high-quality environmentally friendly plastic powder metal spray paint (plastic) coating hardness > H, metal spray paint (plastic) coating impact strength should be free of peeling, cracks, wrinkles, metal spray paint (plastic) coating adhesion <2 level, general technical conditions for metal furniture OB/T3826-1999 corrosion resistance test method for metal coating and chemical treatment layer of light industrial products neutral salt spray test (NSS) method requirements

Paint film adhesion, paint film hardness, paint film durable impact performance meet national standards.

Spraying equipment is an automatic assembly line, so that the product surface spray layer is uniform and durable.





DISINFECTION SUPPLY CENTER
/ 消毒供给中心

消毒供应中心承担着医院内各种无菌物品的供应，它担负着医疗器械的清洗、包装、消毒和供应工作，是控制医院内感染、保证医疗护理质量的重点科室之一。

The supply center of sterilized object is responsible for the supplying work of various sterilized objects. It undertakes the cleaning, packing, sterilizing and supplying of medical instrument. It is also the key department to control infection in the hospital and ensure the quality of medical treatment.



Model: YL-I7101
Cleaning table 1



Model: YL-I7102
Cleaning table 2



Model: YL-I7103
Cleaning table 3



Model: YL-I7201
Single-sided packing table
(with wheels)



Model: YL-I7202
Packing table
(with light)



Model: YL-I7301
Inspection table



Model: YL-I7302
Classification and verification table
(with wheels)



Model: YL-I7303
Multi-layer storage rack
(with wheels)



Model: YL-I7304
Net basket rack



Model: YL-I7305
Transfer table



Model: YL-K701
Transfer cart



Model: YL-K702
Waste cart



Model: YL-B1407
Storage cabinet



Model: YL-I7306
Two-drawer glass door instrument cabinet



Model: YL-I7307
Full glass door instrument cabinet

HOSPITAL GARBAGE CABINET

/ 医用垃圾柜

Classification of Medical Waste: Infectious waste, Pathological waste, Injury waste, Pharmaceutical waste, Chemical waste



- 钢制柜体，理化板内胆
- 掀门导轨
- 臭氧紫外灯
- 消毒雾喷装置
- 医用垃圾袋
- 不锈钢垃圾袋装夹架
- 内置医用垃圾桶
- 消毒储液罐
- 传动装置
- 脚踏开关

医疗设备 medical equipment



Model: YL-K704-2
Medication delivery cart 3



Model: YL-K708-2
Case trolley 2



Model: YL-K711
First aid cart



Model: YL-D3304
Mobile dining table
Size: 900x450x1020/720mm



Model: YL-K714
Nursing Cart 2



Model: YL-K715
Difficult Airway Cart



Model: YL-K716
Infusion Cart



Model: YL-K717
Rescue Cart



Model: YL-J8101
Mechanical garbage cabinet 1



Model: YL-J8104
Mechanical garbage cabinet 4



Model: YL-K719
Anesthesia cart



Model: YL-K721
Treatment cart 1



Model: YL-K723
Treatment cart 3



Model: YL-K724
Instrument cart

鸿业提供人性化、系统化的适老家具配套 让养老生活更和谐



适老家具 PENSION FURNITURE

- 大堂公共区 Lobby public areas
- 居住功能 Residential function
- 餐厅配套 Restaurant supporting
- 娱乐功能 Entertainment function
- 康复训练 Rehabilitation training



鸿业适老家具秉持环保、安全、体贴、舒适、无障碍的设计理念，致力于人、家具、环境的和谐统一，为养老行业提供人性化、系统化的适老家具配套，让养老生活更和谐。

Hongye Pension Furniture adheres to the design concept of environmental protection, safety, thoughtfulness, comfort and barrier-free. It is committed to the harmonious integration of people, furniture and environment, and provides humanized and systematic pension furniture for the aged care industry, so that the old-age life is more harmonious.



鸿业适老家具
HONGYE
Pension furniture

FURNITURE SUITABLE FOR THE ELDERLY QUALITY ESCOR 为适老家具品质护航



► R&D team

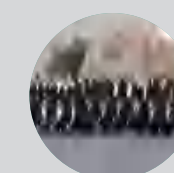
Talents in many fields, such as R&D and design of furniture for the elderly, color matching, and research on the physical tolerance of the elderly, help with R&D.

► Data support

Continuously update the experience data of the elderly, and make improvements to the experience data of the elderly with different ethnic characteristics.

► Technical advantages

Cooperate with the German elderly furniture laboratory, which entered the aging stage earlier, and master the technical craftsmanship of German-style furniture for the elderly.



标准化生产

Standardized production

The unique production site management system strictly implements process monitoring, resource tracking, real-time analysis and other management of factory production in accordance with international standards, fully integrates various data from various units on site, effectively improves production efficiency and ensures product quality.

HONGYE

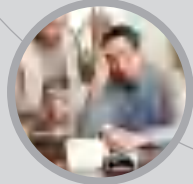
鸿业 适老家具

3000 多个设计细节专为老年人而生

- ✓ 更安全
- ✓ 更自如
- ✓ 更舒适
- ✓ 更健康

How to choose furniture suitable for the elderly?

The elderly are prone to muscle fatigue



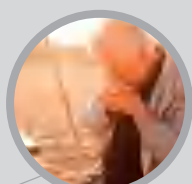
The elderly have poor color adaptation



The elderly are not very flexible



The elderly have poor environmental adaptation



They are prone to discomfort when sitting for a long time, under pressure, or under stress

Consider safety when sitting, walking, etc.

They are more demanding on the environmental protection of furniture materials and space

鸿业适老家具 根据老年人身体机能设计

Designed according to the function of the elderly

01 Safer

-Multiple safety protections, designed according to the behavior habits of the elderly
Using thickened materials, designed according to the usage habits of the elderly, armrest support, rounded corners, shaking, and anti-slip.



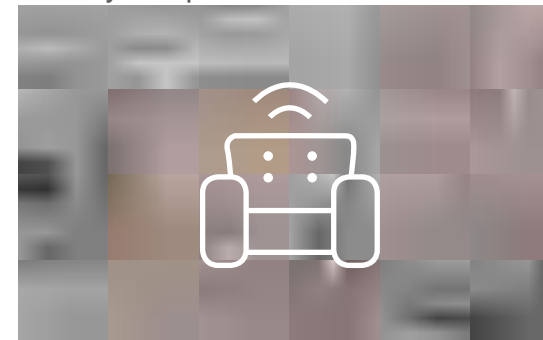
02 More environmentally friendly

-0 formaldehyde, 0 odor, more in line with the immune standards of the elderly
Use environmentally friendly materials, raw materials meet the European toy environmental protection standard level, 0 formaldehyde, 0 odor, can issue a powder test report.



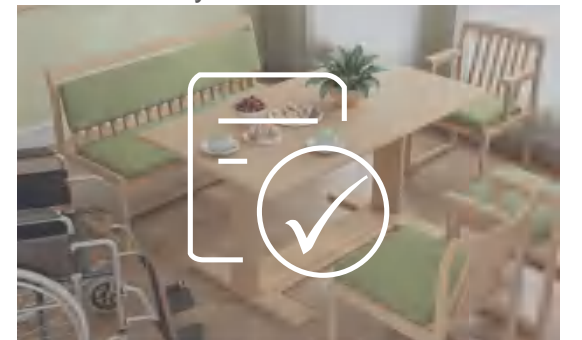
03 More comfortable

-Color saturation design fully considers the color adaptability of the elderly
Color matching is done by color experts, and the color purity and brightness are more based on the elderly's experience data.



04 More labor-saving

-The width and height mechanics of the furniture are designed according to the muscle tolerance of the elderly
The furniture is designed by a German senior-friendly furniture design expert in terms of height, width, softness and hardness to suit the physical functions of the elderly.



整体空间适老家具定制，一站式解决整体空间家具

Customize the overall space elderly furniture, get the overall space furniture in one stop

NURSING HOME

INSTITUTION LOBBY

适老机构大堂

适老家具大堂前台适老家具，以简约的线条，搭配适当的圆弧，通过空间温和的木质，使人感受到宁静祥和的感觉，使老人对机构产生信任感！服务台两边凹进去设计，为行动不便的老人，提供可放置轮椅的空间。

With simple lines, with appropriate circular arcs, through the gentle wood of space, people feel the feeling of peace and harmony, so that the elderly have a sense of trust in the organization! The desk is recessed on both sides to provide a wheelchair-accessible space for the elderly with limited mobility.





SUITABLE FOR
THE ELDERLY SOFA
/ 适老沙发



Name: Single Sofa
Model: YY-S3104
L:800mm
W:750mm
H:850mm

Name: Three-seater Sofa
Model: YY-S3105
L:2000mm
W:780mm
H:850mm

Age-friendly elements
Seat height 450H, seat depth ≤ 580D.
Solid wood frame, durable and stain-resistant, safe rounded corners to prevent collision damage: hard seat cushion, high-density sponge, waterproof seat bag, zipper-type removable and washable outer cover.

Material description:
Walnut wood/odorless environmentally friendly paint/high-density high-quality sponge/fabric surface



Name: Long coffee table
Model: YY-F5002
L: 1200mm
W: 600mm
H: 550mm

Name: Square coffee table
Model: YY-F5003
L: 500mm
W: 500mm
H: 650mm

Name: Round edge table
Model: YY-F5004
L: 300mm
W: 300mm
H: 550mm

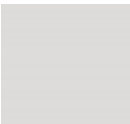
Material description:
Solid wood multilayer board + walnut wood frame / odorless environmentally friendly paint

Aging-friendly elements
The height is high to prevent excessive bending during use, and the corners are rounded to reduce collision damage.

Color Selection The following classic colors are all created by the Hongye design team.

Colorful Colors, Dominated By You

There are many color palettes for you to choose from, and you can customize them according to your decoration style.



White paint



Wood grain
WD01



Wood grain
WD02



Wood grain
WD03



Waterproof
cloth
UP01



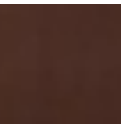
Waterproof
cloth
UP02



Waterproof
cloth
UP03



Waterproof
cloth
UP04



Leather
LE01



Leather
LE02



Leather
LE03

- ☒ Clear texture ☒ Strong stain resistance ☒ Waterproof fabric ☒ Easy to clean ☒ Natural color

SUITABLE FOR
THE ELDERLY SOFA
/ 适老沙发



Name: Single sofa
Model: YY-S3106
L: 700mm
W: 780mm
H: 900mm

Aging-friendly Elements
Seat height 450H, seat depth ≤ 580D,
Solid wood frame, durable and stain-resistant, safe rounded corners to prevent collision damage,
Seat cushion is relatively hard, high-density sponge, waterproof seat bag.

Material Description:
Rubber wood/odorless environmentally friendly paint/high-density high-quality sponge/fabric surface



Name: Three-seat sofa
Model: YY-S3107
L: 2000mm
W: 780mm
H: 900mm

Aging-friendly Elements
Seat height 450H, seat depth ≤ 580D, adjusted according to the ergonomic size of the elderly, solid wood frame, durable and stain-resistant, safe rounded corners to prevent collision injuries, movable cushion, detachable and washable structure, hardened sponge, convenient for the elderly to sit up and sit down.

Material Description:
Rubber wood/odorless environmentally friendly paint/high-density high-quality sponge/fabric surface



Name: Long coffee table
Model: YY-F5005
L: 1000mm
W: 600mm
H: 550mm

Aging-friendly Elements
Marble tabletop, high height to prevent excessive bending during use.
Rounded corner design to reduce collision damage.

Material Description:
Solid wood multilayer board + rubber wood frame / odorless environmentally friendly paint / marble tabletop



Name: TV cabinet
Model: YY-G6003
L: 1800mm
W: 400mm
H: 600mm

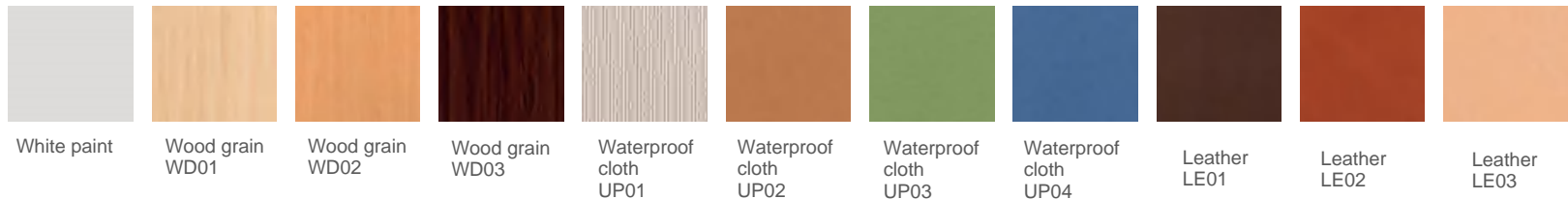
Aging-friendly Elements
Multi-faceted safety edges effectively prevent objects from falling to the ground. The height is high to prevent excessive bending during use. The rounded corner design reduces collision damage.

Material Description:
Solid wood multilayer board + rubber wood frame / odorless environmentally friendly paint / marble countertop



Color Selection The following classic colors are all created by the Hongye design team.

Colorful Colors, Dominated By You
There are many color palettes for you to choose from, and you can customize them according to your decoration style.



☒ Clear texture ☒ Strong stain resistance ☒ Waterproof fabric ☒ Easy to clean ☒ Natural color

ELDERLY CARE SUITE / 养老套间

适老夫妻房家具，以温润的木质为主，注重自然舒适，显示浪漫自由的闲情逸致。
The American couple's double room is mainly made of warm wood. It pays attention to natural comfort and shows romantic and free leisure.



Name: Self-care bed
Model: YY-E4302
L: 2130mm
W: 1230mm
H: 1100mm

Aging-friendly elements
The bed screen is soft and easy for the elderly to lean on. The mattress surface height is 500H, which is convenient for the elderly to sit up. There are solid wood guardrails on both sides of the bed, and the contact surface is safely rounded to reduce collision damage

Material description:
Solid wood multilayer board + rubber wood solid wood frame / odorless environmentally friendly paint



Name: Bedside table
Model: YY-B1305
L: 500mm
W: 400mm
H: 600mm

Aging-friendly elements
Higher design, solid wood frame, contact surface safety rounded corners, reduce collision damage.

Material description:
1. Main body: high-quality wood grain color E1 grade melamine board, with high-quality 2.0mm thick PVC edge banding strips, fully automatic edge banding machine to complete the edge banding
2. Guide rail: professional-grade medical guide rail, with smooth, silent, anti-overturning function



Name: Locker
Model: YY-B1111
L: 1600mm
W: 500mm
H: 750mm

Aging-friendly elements
Heightened design, solid wood frame, contact surface safety rounded corners, reduce collision damage, exposed buckle handles.

Material description:
1. Main body: high-quality wood grain color E1 grade melamine board, with high-quality 2.0mm thick PVC edge banding strips, fully automatic edge banding machine to complete edge banding
2. Guide rail: professional-grade medical guide rail, with smooth, silent, anti-overturning function



Name: Square side table
Model: YY-F50012
L: 500mm
W: 500mm
H: 650mm

Aging-friendly elements
The height is high to prevent excessive bending during use, and the corners are rounded to reduce collision damage.

Material description:
Solid wood multilayer board + rubber wood frame/odor-free environmentally friendly paint



Name: Armchair
Model: YY-C2821
L: 600mm
W: 600mm
H: 800mm

Aging-friendly elements
High back design, suitable for long-term sitting; armrests are upturned for easy support: outward-extended armrests to expand the sitting width, with crutch slots on the side.

Material description:
1. Main body: high-quality wood-grain color E1 grade melamine board, with high-quality 2.0mm thick PVC edge banding strips, and fully automatic edge banding machine to complete the edge banding
2. Guide rail: professional-grade medical guide rails are used, which have smooth, silent and anti-overturning functions



Name: Desk
Model: YY-D2542
L: 1200mm
W: 550mm
H: 1200mm

Aging-friendly elements
The height is high to prevent excessive bending during use, and the corners are rounded to reduce collision damage.

Material description:
Solid wood multilayer board + rubber wood frame / odorless environmentally friendly paint



Name: Wardrobe
Model: YY-B1941
L: 1000mm
W: 550mm
H: 2000mm

Aging-friendly elements
The height is high to prevent excessive bending during use, and the corners are rounded to reduce collision damage.

Material description:
Solid wood multilayer board + rubber wood frame / odorless environmentally friendly paint



Name: Sofa
Model: YY-C3879
L: 1800mm
W: 730mm
H: 850mm

Aging-friendly elements
The height is high to prevent excessive bending during use, and the corners are rounded to reduce collision damage.

Material description:
Metal footstool/high-density high-quality sponge/high-quality leather



Model: YY-E4304 Self-Care Bed
Size: 2130x1230x1100mm

- Main Structure: E1-grade multilayer solid wood board with wood veneer, finished with odor-free, environmentally friendly paint.
- Legs: High-quality cold-rolled steel plates with electrostatic powder coating on the metal surface.

Model: YY-B1307 Bedside Cabinet
Size: 500x400x600mm

- Main Structure: High-quality wood-grain E1-grade melamine board, edged with premium 2.0mm thick PVC strips using a fully automated edge-banding machine.
- Rails: Professional-grade medical rails with smooth operation, silent functionality, and anti-tilt features.

Model: YY-B1119 Modular Wardrobe
Size: 2500x1000x2200mm

- Main Structure: High-quality wood-grain E1-grade melamine board, edged with premium 2.0mm thick PVC strips using a fully automated edge-banding machine.
- Rails: Professional-grade medical rails with smooth operation, silent functionality, and anti-tilt features.

NURSING MULTI-PERSON ROOM / 护理多人房



OLD MAN'S ROOM SINGLE ROOM / 老人居室单人间



YL-E4306 Self-Care Bed
1600×2150×1200mm



YL-B1126 Wardrobe
1000×600×2000mm



YL-S3118 Three-Seater Sofa
1930×800×950mm



YL-S3119 Single-Seater Sofa
740×740×870mm



YL-C2616 Chair
480×560×920mm



YL-B1140 Shoe Changing Bench
680×420×600mm



YL-B1309 Bedside Cabinet
500×450×650mm



YL-G6005 TV Cabinet
1300×500×650mm



YL-D3409 Desk
1200×500×750mm



YL-B1210 Vanity Cabinet
650×500×820mm



YL-F5015 Long Coffee Table
1100×550×460mm



YL-F5016 Round End Table
Φ520×600mm

OLD MAN'S ROOM

DOUBLE ROOM

/ 老人居室双人间



YL-E4307 Nursing Bed
2100×1280×1100mm



YL-B1310 Bedside Cabinet
500×500×810mm



YL-B1127 Wardrobe
1000×600×2200mm



YL-B1211 Vanity Cabinet
600×420×850mm



YL-C2612 Recliner Chair
680×700×840mm



YL-C2613 Recliner Chair
615×645×880mm



YY-D3213 Round Table
Φ800×750mm



YL-C2617 Chair
550×576×880mm



YL-D3410 Desk
1200×500×750mm



YL-G6006 TV Cabinet
1500×500×650mm



YL-B1141 Shoe Changing Bench
1100×420×680mm

FULL CARE
ELDERLY ROOM
/ 全护理老人居室



YL-B1128
Combination Cabinet (Bookshelf + Wardrobe)
1800×500×2000mm



YL-G6012 TV Cabinet
2000×500×750mm



YL-S3120 Multi-Seater Sofa
1430×850×880mm



YL-S3121 Single-Seater Sofa
770×850×880mm



YL-C2615 Recliner Chair
680×720×920mm



YL-C2618 Chair
580×600×850mm



YL-C2614 Recliner Chair
750×830×1030mm



YL-F5018 Long Coffee Table
1000×500×460mm



YL-F5017 Square Coffee Table
480×480×600mm



YL-D3305 Mobile Dining Table 5



YL-B1311 Bedside Cabinet
500×450×750mm



APARTMENT-A

海南海口中央首府碧桂园



YL-E4308 Self-Care Bed
1850×2100×1100mm



YL-B1312 Bedside Cabinet
600×400×550mm



YL-B1129 Wardrobe
2200×600×2350mm



YL-D3412 Desk
2200×450×750mm



YL-C2620 Chair
480×530×650mm



YL-F5019 Round Corner Table
Φ480×600mm



YL-C2619 Recliner Chair
680×690×850mm



APARTMENT-A
海南海口中央首府碧桂园



YL-D3214 Long Dining Table
1500×800×760mm



YL-C2830 Dining Chair
460×585×900mm



YL-B1142 Cabinet
3710×600×2300mm



YL-B1212 Vanity Cabinet
1750×550×380mm



YL-S3122 Three-Seater Sofa
2800×850×850mm



YL-C2621 Recliner Chair
750×680×830mm



YL-F5020 Long Coffee Table
980×690×400mm



YL-F5021 Round Coffee Table
Φ400×460mm



YL-G6007 TV Cabinet
2500×450×2300mm



APARTMENT-B

湖南张家界碧桂园

Material Description:

- Board Material: E1-grade particle board with melamine paper veneer, warm white cabinet body; high-quality PVC edge banding, with a uniform surface color, natural texture, and tight seams.
- Hardware Accessories: Premium branded hardware components.

APARTMENT-F
中共镇江市委党校公寓



YL-E4313 Self-Care Bed 1810×2010mm
Bed Screen 1200×2000mm



YL-B1317 Bedside Cabinet
550×450×500mm



YL-G6013 TV Cabinet
1404×438×600mm



YL-S3131 Three-Seater Sofa
2120×910×741mm



YL-F5027 Long Coffee Table
1450×800×440mm



YL-C2625 Recliner Chair
660×678×896mm



YL-F5026 Coffee Table
530×480×550mm



YL-B1149 Coat Rack
508×508×1781mm



YL-C2624 Chair
450×510×945mm



YL-D3415 Desk
1400×600×780mm



YL-B1148 Luggage Cabinet
900×550×600mm



Product Name: Dining Chair 3

Model: YY-C2803
Length/L: 480mm
Width/W: 530mm
Height/H: 830mm

Elderly-Friendly Features

Seat height: 450mm,Seat depth: 550mm
Curved armrests Backrest with cut-out handle design for easy gripping and movement.

Material Description:

Rubberwood solid frame/Odor-free, environmentally friendly paint/High-elastic foam/Fabric soft upholstery



Product Name: Dining Chair 4

Model: YY-C2804
Length/L: 580mm
Width/W: 615mm
Height/H: 830mm

Elderly-Friendly Features

Seat height: 450mm,Armrest height: 630mm
Half-armrest design Backrest with cut-out handle design for easy gripping and movement.

Material Description:

Rubberwood solid frame/Odor-free, environmentally friendly paint/High-elastic foamFabric soft upholstery



Product Name: Long Dining Table

Model: YY-D3205
Length/L: 1500mm
Width/W: 750mm
Height/H: 750mm

Elderly-Friendly Features

Recessed tabletop design for easy dining by wheelchair users.Central assist handle hole for added support when moving or adjusting.Rounded table corners to reduce the risk of injury from collisions.

Material Description:

Multi-layer solid wood board + rubberwood solid frame/
Odor-free, environmentally friendly paint mini



Product Name: Dining Chair 7

Model: YY-C2807
Length/L: 480mm
Width/W: 530mm
Height/H: 830mm

Elderly-Friendly Features

Seat height: 450mm,Seat depth: 470mmCurved armrests for closer proximity to the table.Side design with a slot for a cane.

Material Description:

Rubberwood solid frame/Odor-free, environmentally friendly paint/High-elastic foam/Fabric soft upholstery



Product Name: Square Dining Table

Model: YY-D3208
Length/L: 1000mm
Width/W: 1000mm
Height/H: 750mm

Elderly-Friendly Features

Curved edge design for easy elbow support when elderly users sit close to the table.Easy to assemble, making it suitable for various occasions and settings.

Material Description:

Multi-layer solid wood board + rubberwood solid frame/
Odor-free, environmentally friendly paint



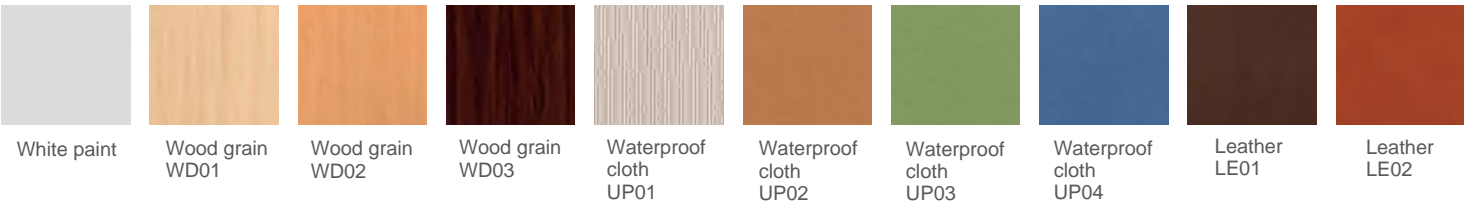


Color Options

The following classic colors are carefully crafted by the Hongye Design Team.

Vibrant Colors, Yours to Choose

Here, a variety of color swatches are available for you to select from, allowing you to customize and match according to your own interior design style.



☒ Clear texture ☒ Strong stain resistance ☒ Waterproof fabric ☒ Easy to clean ☒ Natural color



Product Name: Swivel Dining Chair 5

Model: YY-C2805
Length/L: 620mm
Width/W: 680mm
Height/H: 900mm

Material Description:

Rubberwood solid frame/Odor-free, environmentally friendly paint/High-elastic foam/Fabric soft upholstery

Elderly-Friendly Features

360° rotating seat for easy access, helping elderly individuals with limited mobility to sit down comfortably.

Product Name: Dining Chair 6

Model: YY-C2806
Length/L: 535mm
Width/W: 580mm
Height/H: 850mm

Material Description:

Rubberwood solid frame/Odor-free, environmentally friendly paint/High-elastic foam/Fabric soft upholstery

Elderly-Friendly Features

Backrest with cut-out handle design for easy gripping and movement. Removable and washable seat cushion.Stackable design (up to four chairs), saving space.



Product Name: Petal Table

Model: YY-D3206
Length/L: 1680mm
Width/W: 730mm
Height/H: 780mm

Material Description:

Multi-layer solid wood board + rubberwood solid frame/Odor-free, environmentally friendly paint

Elderly-Friendly Features

Petal-shaped design for easy elbow support when elderly users sit close to the table.Adjustable table leg height with two settings to meet different needs.Wheelchair accessible.

Product Name: Butterfly Table

Model: YY-D3207
Length/L: 1200mm
Width/W: 1200mm
Height/H: 750mm

Material Description:

Multi-layer solid wood board + rubberwood solid frame/Odor-free, environmentally friendly paint

Elderly-Friendly Features

Curved edge design for easy elbow support when elderly users sit close to the table.Easy to assemble, making it suitable for various occasions and settings.





AGING CHAIRS WITH ARMRESTS 适老扶手餐椅

Model: YY-C2808 Dining Chair 8
Size: 480×530×750mm

Rubberwood solid frame/Odor-free,environmentally friendly paint/High-elastic foam/Fabric soft upholstery



Model: YY-C2809
Dining Chair 9
Size: 480×530×750mm

Rubberwood solid frame/Odor-free, environmentally friendly paint/High-elastic foam/Fabric soft upholstery



Model: YY-C2811
Dining Chair 11
Size: 480×530×750mm

Rubberwood solid frame/Odor-free, environmentally friendly paint/High-elastic foam/Fabric soft upholstery



Model: YY-C2813
Dining Chair 13
Size: 480×530×750mm

Rubberwood solid frame/Odor-free, environmentally friendly paint/High-elastic foam/Fabric soft upholstery



Model: YY-C2815
Dining Chair 15
Size: 480×530×750mm

Rubberwood solid frame/Odor-free, environmentally friendly paint/High-elastic foam/Fabric soft upholstery



Model: YY-C2817
Dining Chair 17
Size: 480×530×750mm

Rubberwood solid frame/Odor-free, environmentally friendly paint/High-elastic foam/Fabric soft upholstery



Model: YY-C2810
Dining Chair 10
Size: 480×530×750mm

Rubberwood solid frame/Odor-free, environmentally friendly paint/High-elastic foam/Fabric soft upholstery



Model: YY-C2812
Dining Chair 12
Size: 480×530×750mm

Rubberwood solid frame/Odor-free, environmentally friendly paint/High-elastic foam/Fabric soft upholstery



Model: YY-C2814
Dining Chair 14
Size: 480×530×750mm

Rubberwood solid frame/Odor-free, environmentally friendly paint/High-elastic foam/Fabric soft upholstery



Model: YY-C2816
Dining Chair 16
Size: 480×530×750mm

Rubberwood solid frame/Odor-free, environmentally friendly paint/High-elastic foam/Fabric soft upholstery



Model: YY-C2818
Dining Chair 18
Size: 480×530×750mm

Rubberwood solid frame/Odor-free, environmentally friendly paint/High-elastic foam/Fabric soft upholstery



ELDERLY
ACTIVITY CENTER
/ 老人活动中心





YY-D3211 Long Dining Table
1600×800×750mm



YL-D3212 Long Dining Table
1600×800×750mm



YY-D3210 Square Dining Table
1000×1000×750mm



YY-D3209 Square Dining Table
1000×1000×750mm



YL-D3408 Mahjong Table
1000×1000×760mm



YL-C2829 Dining Chair



YL-C2826 Dining Chair
560×575×880mm



YL-C2827 Dining Chair



YL-D3407 Calligraphy and Painting Table
1800×700×760mm



YL-C2611 Calligraphy and Painting Chair



YL-B1135 Bookshelf
1800×400×2200mm

WRITING AND DRAWING

养老院书画室



Product Name: Calligraphy and Painting Chair 5

Model: YY-C2605
Length/L: 550mm
Width/W: 600mm
Height/H: 650mm

Material Description:

Rubberwood solid frame/Odor-free, environmentally friendly paint/High-elastic foam/Fabric soft upholstery

Elderly-Friendly Features

Seat height: 450mm,Seat depth: 580mm
Curved back design for comfortable support
Solid wood frame, durable and resistant to stains
Firm seat cushion for added support
Waterproof seat cover for easy maintenance.



Product Name: Calligraphy and Painting Table

Model: YY-D3401
Length/L: 1400mm
Width/W: 800mm
Height/H: 760mm

Material Description:

Multi-layer solid wood board + rubberwood solid frame/Odor-free, environmentally friendly paint

Elderly-Friendly Features

Rounded corner design at joints to reduce the risk of injury from collisions.



Product Name: Calligraphy and Painting Chair 6

Model: YY-C2606
Length/L: 550mm
Width/W: 600mm
Height/H: 800mm

Material Description:

Walnut wood solid frame/Odor-free, environmentally friendly paint

Elderly-Friendly Features

Seat height: 500mm,Seat depth: 580mm
High back design for easy leaning and support
Solid wood frame for durability and stability.



Product Name: Calligraphy and Painting Table 2

Model: YY-D3402
Length/L: 1800mm
Width/W: 800mm
Height/H: 850mm

Material Description:

Multi-layer solid wood board + walnut wood solid frame/Odor-free, environmentally friendly paint

Elderly-Friendly Features

Rounded corner design at joints to reduce the risk of injury from collisions.



Product Name:Tea Chair

Model: YY-C2607
Length/L: 550mm
Width/W: 600mm
Height/H: 800mm



Product Name:Tea Table

Model: YY-D3403
Length/L: 2200mm
Width/W: 800mm
Height/H: 760mm



Product Name:Leisure Sofa

Model: YY-S3115
Length/L: 720mm
Width/W: 700mm
Height/H: 850mm



Product Name:Round Corner Table

Model: YY-F50013
Length/L: 500mm
Width/W: 500mm
Height/H: 500mm

LEISURE TEA ROOM / 休闲茶室





**LET THE
LIFE OF THE
ELDERLY**
BE HARMONY
HARMONIOUS
让养老生活更和谐



伴随老人年龄的增长，身体机能渐渐衰退，各种慢性病不断入侵。训练室中，在护理人员的帮助下，进行锻炼，以提高生活能力，减少患病风险，减少智力衰退，改善精神状态等。

With the aging of the elderly, physical function gradually decline, a variety of chronic diseases continue to invade, Training room, with the help of nursing staff, exercise, to improve the ability to live, reduce the risk of disease, reduce mental decline, improve mental state,

REHABILI-TATION TRAINING ROOM 康复训练室

Product Name: Leisure Chair 4

Model: YY-C2604

Length/L: 600mm
Width/W: 600mm
Height/H: 800mm

Elderly-Friendly Features

Solid wood frame, durable and stain-resistant, Safety rounded corners to prevent collision injuries, Firm seat cushion for added support, Waterproof seat cover for easy maintenance

Material Description:

Rubberwood solid frame/Odor-free, environmentally friendly paint/High-elastic foam/Fabric soft upholstery



Product Name: Parallel Bars

Model: YY-LP001

Elderly-Friendly Features

Solid wood frame, durable and stain-resistant, Safety rounded corners to prevent collision injuries

Material Description:

- Rubberwood, surface sprayed with odor-free, environmentally friendly paint

- Brackets: High-quality cold-rolled steel plate, with electrostatic powder coating on the metal surface



Product Name: Training

StepModel: YY-LP002

Elderly-Friendly Features

Solid wood frame, durable and stain-resistant, Safety rounded corners to prevent collision injuries

Material Description:

- Rubberwood, surface sprayed with odor-free, environmentally friendly paint

- Brackets: High-quality cold-rolled steel plate, with electrostatic powder coating on the metal surface



NURSING HOME
INFUSION AREA
养老院输液区



老年人体弱多病，为长者提供药物治疗时，适老机构专门设立了输液区，方便长者接受不同的治疗。

When the elderly are sick and sick and provide medical treatment for the elderly, the old-age care institutions have set up an infusion area to facilitate the elderly to receive different treatments.



Product Name: Infusion Sofa

Model: YY-S3116

Length/L: 830mm
Width/W: 850mm
Height/H: 850mm

Elderly-Friendly Features

Seat height, seat depth, armrest height, seat tilt, and backrest tilt adjusted according to elderly ergonomic dimensions for easier sitting and standing.

Material Description:

Rubberwood solid frame/Odor-free, environmentally friendly paint/High-elastic foam/Fabric soft upholstery

Product Name: Long Coffee Table

Model: YY-F5010

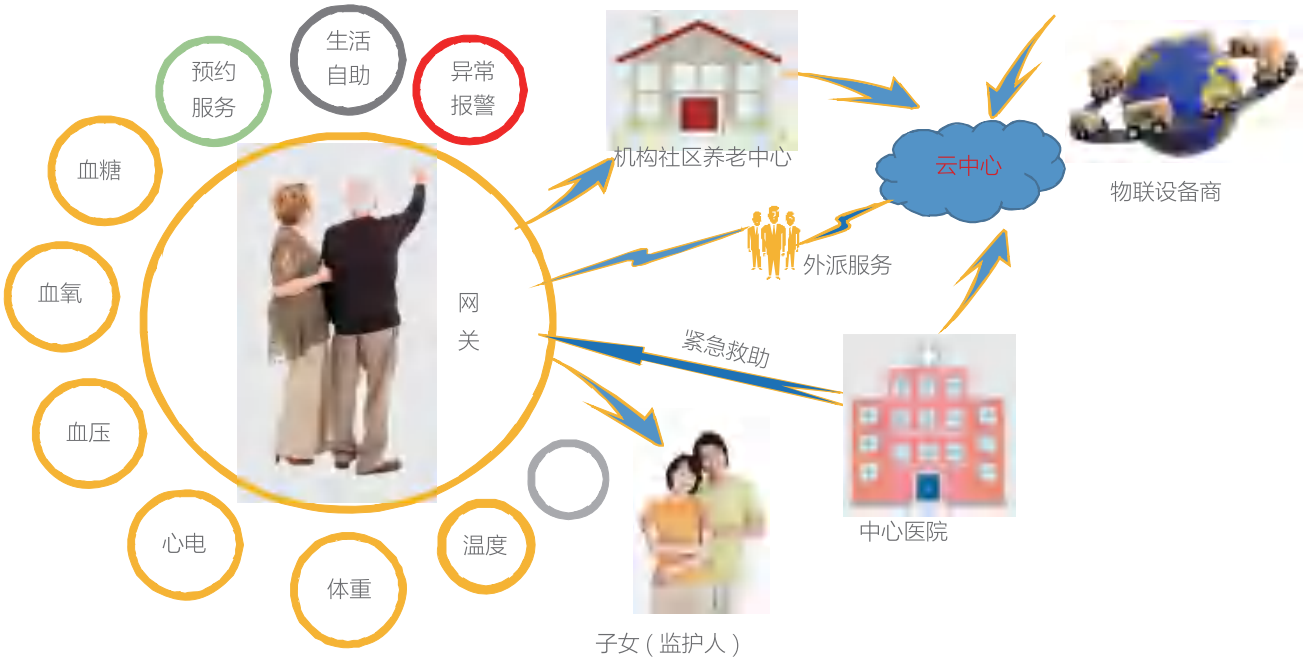
Length/L: 470mm
Width/W: 670mm
Height/H: 550mm

Material Description:

Multi-layer solid wood board + rubber wood solid frame/Odor-free, environmentally friendly paint

INTELLIGEN HEALTHCARE SYSTEM 鸿业智能医养系统

医养是产业是经济更是一份社会责任，以人为本用科技产品和创新服务
满足老年人适老的需要。
Health care industry is more about social responsibility rather than economy.
People is the foundation, with scientific product and innovative service we satisfied
the health care demand of old people.



- 

生命体征管理系统
健康管理与预警处理
- 

精神陪护
生活品质的源泉
- 

无障碍系统
日常生活照护
- 

灯光管理系统
环境健康调理