



HONGYE FURNITURE GROUP

Commercial Furniture **ONE-STOP SOLUTION SUPPLIER**

HONGYE FURNITURE GROUP SELL THE BEST
PRODUCTS TO THE WORLD

GUANGDONG HONGYE FURNITURE MANUFACTURING CO., LTD



Hongye Furniture Group is a furniture company with a history of more than 30 years. It was founded in Yongkang, Zhejiang, and developed in the Sino-Europe (Jiangmen) SME International Cooperation Zone - Heshan Core Area. With a registered capital of 230 million yuan, over 1,000 employees, and an annual tax payments exceeding 10 of millions, the company has built over 300,000 square meters of garden-style factory buildings and a supporting employee village.

The group's business covers more than 200 countries and regions.It currently mainly produces 6 series of furniture: 1. Office furniture series, 2. Hospitality furniture series, 3. Bank furniture series, 4. Medical healthcare furniture series, 5. Education furniture series, 6. Apartment furniture series.

In 2021. Hongye Furniture Group invested in the construction of the Laisu Hongyuan Cultural Tourism Project, actively contributing to the construction of the Greater Bay Area.

DEVELOPMENT HISTORY

-
-
- 2024 ● Honored as the only newly certified "Guangdong Forestry Leading Enterprise" in Jiangmen City.
The Lesuhongyuan Cultural Tourism Project was opened to the public.
- 2021-2023 ● Over 50,000 square meters of high-standard factory buildings in Yaogang were put into operation.
The "Super Five-Star" hotel furniture showroom was opened.
The high-end commercial furniture showroom was opened.
- 2019-2020 ● The six major series showrooms upgrades.
The "Juedu" integrated + office furniture brand was launched.
Signed a 600 million yuan agreement with Heshan Government for the Lesuhongyuan Cultural Tourism Project.
- 2015-2018 ● Won the "Famous Trademark of Guangdong Province" and "Guangdong Province Famous Brand Products".
Its "Jiangnan" office furniture brand officially launched.
Successfully acquired two old Taiwan-funded enterprises and transformed them into the hardware factory and soft furniture factory respectively.
- 2011-2014 ● Hongye's workshops for paint, panel, soft furniture, veneer, solid wood, hotel, and carton were put into production.
Hongye Employee Village and the office building were officially completed.
- 2010 .3 ● Guangdong Hongye Furniture Manufacturing Co., Ltd. was officially established.
- 1983 ● Chairman Mr. Wang Hongjie started his business by processing/manufacturing furniture.



MAIN BUSINESS OF THE GROUP

Furniture Division

Hongye Group's furniture sector mainly focuses on commercial furniture and high-end customization. Among which commercial furniture includes three major brands and six series of products.



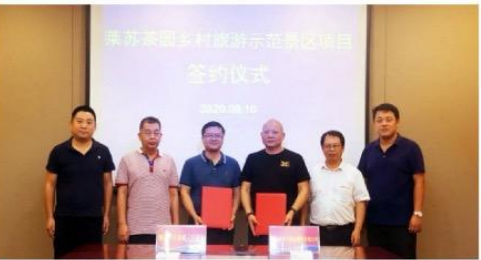
Hotel Division

Hongye Group has investments in 5 operational hotels, including Hongye · Ziling Hotel, Hongye · Zitian Hotel, Hongye · Taotao Hotel, Hongye · Youyi Hotel, and Hongye · Hongyuan Hotel.



Cultural Tourism Division

In 2021, Hongye Group and the Heshan government signed an agreement for the Lesuhongyuan Cultural Tourism Project. It opened to the public in 2024.



Ancient Architecture Division

Inheriting Chinese ancient architecture and promoting Chinese woodworking. Gathering experienced craftsmen and obtaining resources for ancient architecture.



THE MAIN HONORS THAT THE GROUP HAS RECEIVED IN RECENT YEARS

- National high-tech enterprise
- Leading forestry enterprises in guangdong province
- Guangdong Province famous brand products
- Famous trademark in guangdong province
- Key trademark protection in guangdong province
- Guangdong smart environmental engineering research center
- Guangdong Province contract abiding and creditworthy enterprise
- Chinese Industrial Innovative advanced enterprises
- Specialized, focused, peculiar, and Innovative SMEs
- For 14 consecutive years, a major taxpayer in Heshan city
- AAA units for quality, service, and integrity
- Top 10 Chinese Office Furniture Brands in 2024
- Top 10 Hotel Furniture Brands in China in 2024
- Top 10 Green Medical and Nursing Furniture Brands in China in 2024
- Top 10 Chinese Financial System Furniture Brands in 2024



HONGYE FURNITURE GROUP MODERN INDUSTRIAL PARK



PARTIAL PRODUCTION WORKSHOPS





Menu Page /

On the product introduction page, more of our consideration is to integrate designers with products, so that consumers can understand the design concept of the product

Selling Point



► FK006-A



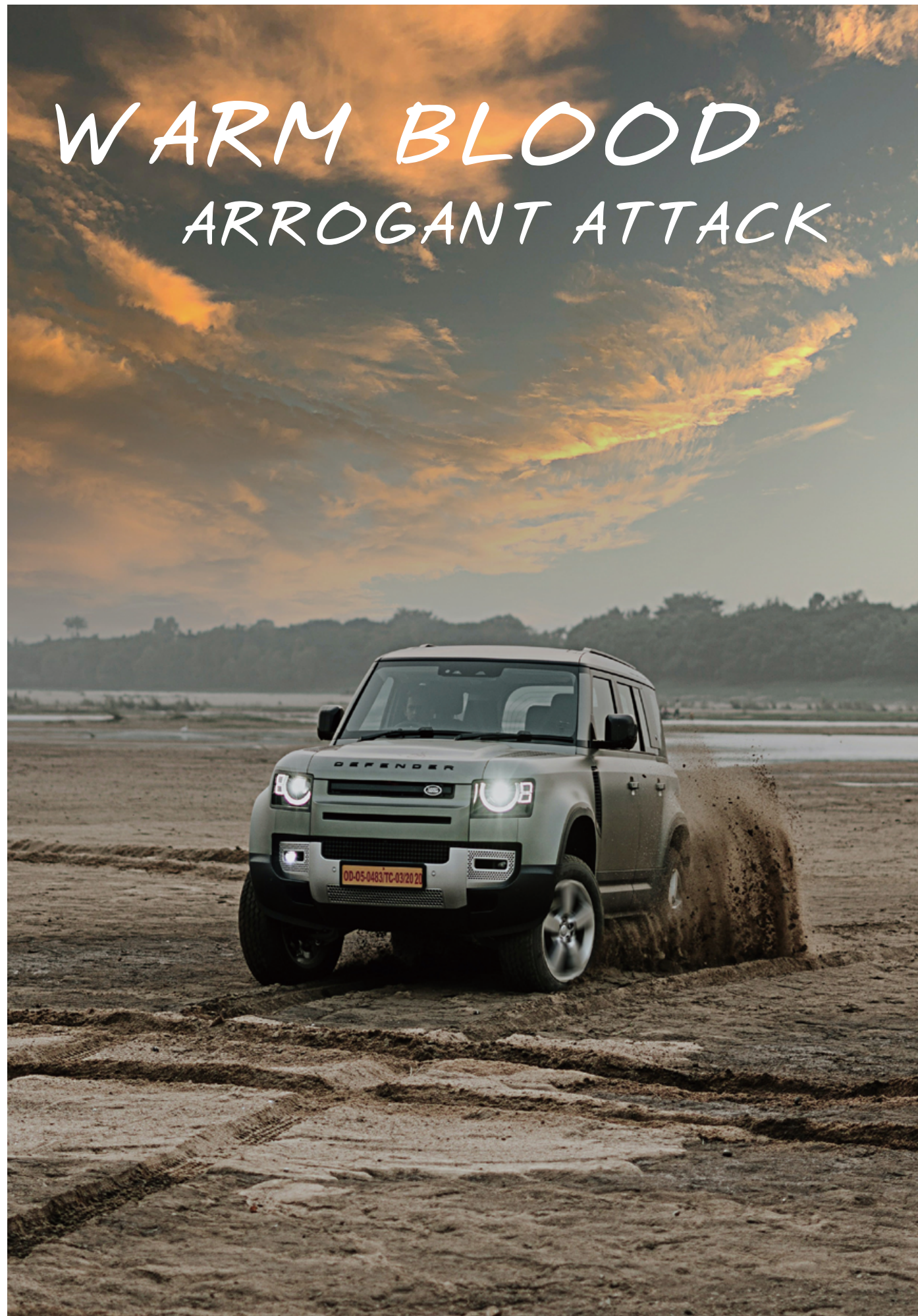
► FK006-A





► FK006-A





► FK006-A

**I SIT
I ENJOY
ROAM FREELY**

Pride is not
necessarily out of
the field
There is always a
journey in my heart

SIMPLE DELICATE

*The gene of bold and
unrestrained atmosphere
and the charm of calm
and introverted can be
touched when seated.*



► FK006-B

Inspired geometric cutting, eye-catching and moving material combination, strive to balance the sense of power in simplicity, strive to reflect the wild temperament in luxury, hide the function in the body and reveal the personality in fashion. Resolute, frank, calm and meticulous, leading the style of the new generation.

R e s o l u t e a n d s t e a d y



► FK006-B



► FK006-A

Simple and thick, clean and neat, and exquisite details contain ingenuity. The bright hardware feet are in sharp contrast with the colorful and quiet chair back and seat, with fashion inspiration and personalized armrest, opening up a comfortable "oasis" for you to enjoy modern office.comfortable support in any sitting posture.

ALL-ROUND
COMFORT





Dolphin

The elegant combination of wood finish, alloy and leather can make the chair highly compatible with the furniture and environment such as desk and cabinet, improve the grade of office space and highlight the high-end business image.



Standing where you are, you will only see the same scenery. Only when you go out, you will see a different sky. No matter how busy business is, we should not restrict our inner desire. You need to succeed and release your inner wildness and blood. Fucco rower will try to accompany you on this journey.



*SIMPLE
DELICATE*

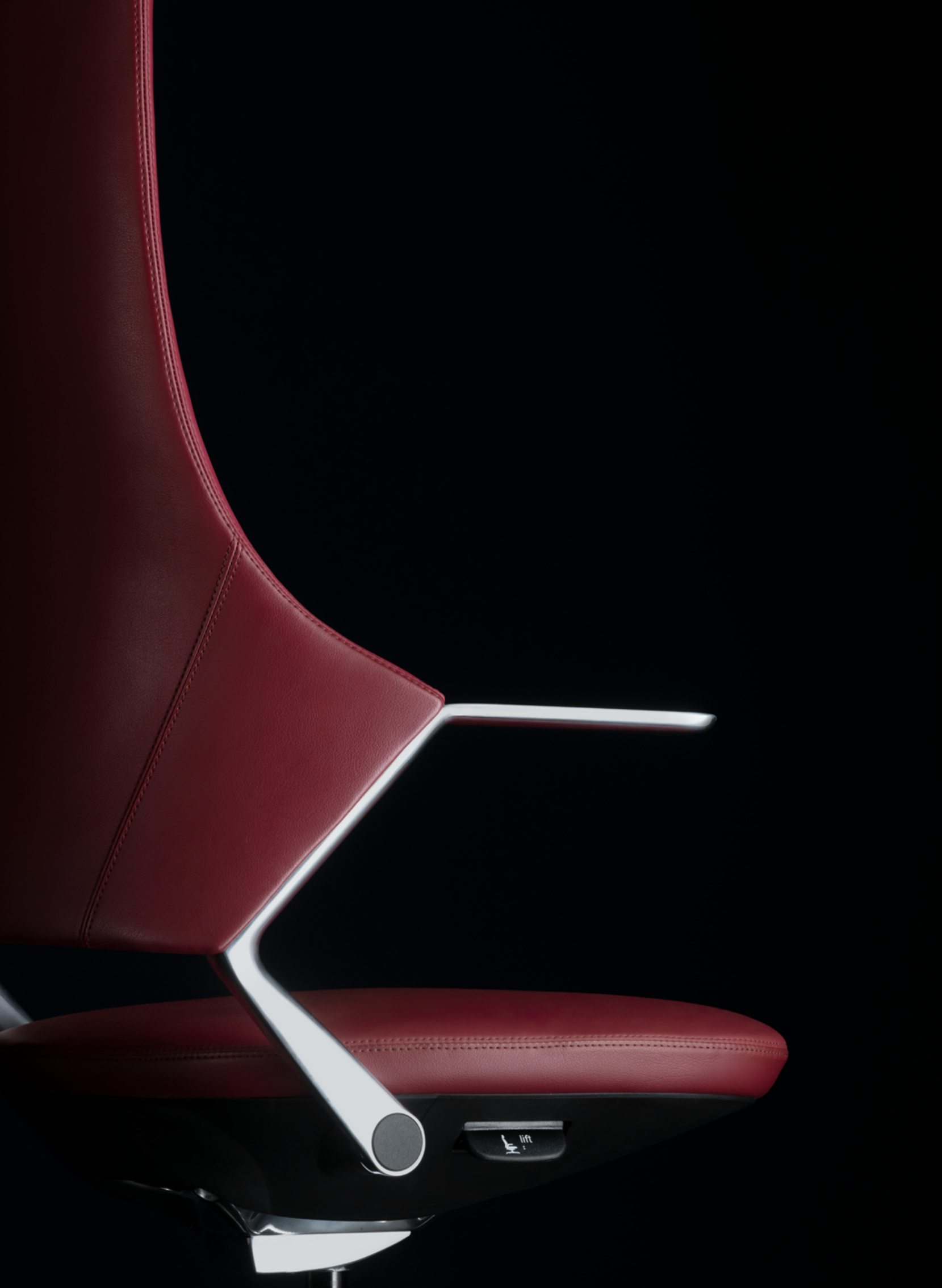


A Graceful Dance Gesture

Beautiful dancing gives people the influence of beauty.



► FK011-A



It allows you to Keep a healthy posture. Even if you lie on your back, your arms should be parallel to the floor.



► FK011-B



No one knows where confidence comes from. Maybe it has thousands of sources and thousands of incarnations.



► FK011-B

Years of experience, cooperation with industrial physicists and the integration of ergonomics theory make the synchronous tilting function so perfect.



► FK011-A



► FK011-B



► FK011-A



SUCCINCT DESIGN

Elegance is a kind of quality beauty; Fashion and popularity are its most brilliant and bright performances. Style and personality are its most unique manifestations.



► FK011-A-1





▶ Explore the way forward

征战四方·霸气外露

The bomber, known as the air fortress, has the advantages of stability, large loading capacity, overbearing attack and flexible operation. As the prototype and conceptual design of this series of STARLIGHT swivel chairs, the bomber is also equipped with its advantages, well-defined geometric line drawing design, simplicity and stability, oversized seating space, comfortable riding experience and multi-functional configuration. STARLIGHT series swivel chairs will surely become a great weapon for you who are galloping in shopping malls and fighting in all directions.

有空中堡垒之称的轰炸机，有着稳重，装载量大，攻击霸道，灵活操作等优点。轰炸机作为本系列 STARLIGHT 转椅的原型以及构想设计，同样也配备了它优越的地方，轮廓分明的几何线图设计，简洁与稳重并存，超大的座椅空间，舒适的乘坐体验，以及多功能的配置搭配。对于驰骋商场、征战四方的你 STARLIGHT 系列转椅必将成为一大利器。





► FK010-A14



► FK010-A12

This is not only your initial feeling when you sit down for the first time, dynamic comfort will encourage you to exercise healthily all day-keep you focused and focused.



► FK010-A12



► FK010-B12

THE BEAUTY OF FASHION
AND FLEXIBILITY

*Advanced look
Sometimes elegant,
sometimes full of
tension
Give people a sense of
freedom and freedom
without restraint*



► FK010-A12



► FK010-B12



► FK010-A13

Exquisite, comfortable and minimalist



► FK010-B13

Exquisite, comfortable and minimalist

GRACE | Imported top layer
cowhide

DESIGN INSPIRATION

Style and personality are its most unique expressions, while leisure and ease are its most gentle and delicate faces.

Domineering Exposed



Nature & Peace

You know some birds are not meant to be caged,
their feathers are just too bright

Hope is a good thing, maybe the best of things,
and no good thing ever dies.



This is not only your initial feeling when you sit down for the first time, dynamic comfort will encourage you to exercise healthily all day-keep you focused and focused.

Selling Point



▶ A1826-1



▶ B1826-1



▶ C1826



▶ A1826-1



▶ A1826-1



▶ B1826-1



▶ C1826



Monday

05:21

It integrates both aesthetical sense and function, create an easy and cozy feeling in the modern household.

Selling Point



▶ A1819-12



▶ B1819-12





▶ A2461



▶ B2461



▶ C2461





Fragrant and elegant room matched fresh and natural colors, gives us the feeling of being surrounded by sunshine forest. It is the scenery on the walls of the city.

Selling Point



▶ A1819-11



▶ B1819-11





Elegance is a kind of quality beauty; Fashion and popularity are its most brilliant and bright performances. Style and personality are its most unique manifestations.

Selling Point



► B2410





THE BEAUTY OF FASHION
AND FLEXIBILITY

With flexible adjustment of angle, the design strives for maximum comfort; ergonomically curved shape make it ideal for user to get relaxed in a shortest period of time.



► B2410



► B2410





No one knows where confidence comes from. Maybe it has thousands of sources and thousands of incarnations.

Selling Point



► C2413-1



Menu Page /

It gives mysterious, unaffected, free, enthusiastic, perfect and coordinated feeling, without pressure and flippancy.

Selling Point



► C2412-1



► C2412-1



It is culture, and elites. Art is no longer important, what important is that it satisfies the high simplicity, enjoyment and boldness of life.

Selling Point



► C2413





Years of experience, cooperation with industrial physicists and the integration of ergonomics theory make the synchronous tilting function so perfect.

Selling Point



► B2416



► B2416



► B2416



► B2416



► C2416-1



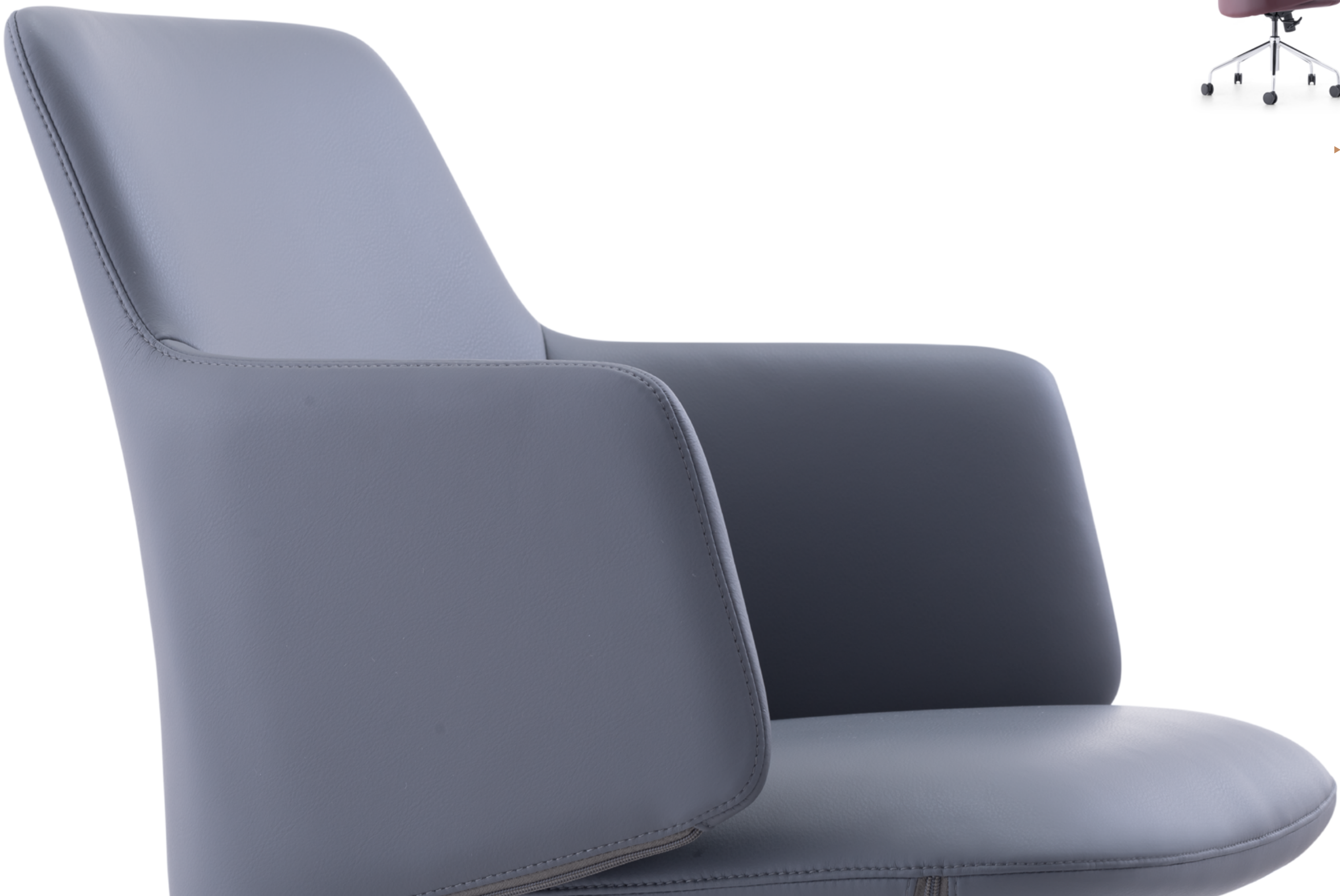
► C2416-1



► C2416-1



► C2416-1



► B2416-1



► C2416



► C2416



► C2416





The unity of function and aesthetics imprints the fashion trend on furniture when the furniture releases its natural flavor thoroughly.

Selling Point





► C2412



► C2412





It is culture, and elites. Art is no longer important, what important is that it satisfies the high simplicity, enjoyment and boldness of life.

Selling Point



► B2401

► B2401



► C2401-1



The elegant overall design, meticulous production and complete quality control create a most comfortable and elegant environment to people.

DAHLIA



► C2401-2





Company Introduction Video



Furniture Showroom Video



Production Workshop Video



Project Case Study Video



YouTube



LinkedIn



TikTok



Facebook



Twitter



Instagram



Pinterest

Leading Forestry Enterprises in Guangdong Province

GUANGDONG HONGYE FURNITURE GROUP CO., LTD.

China · Jiangmen