



HONGYE FURNITURE GROUP SELL THE BEST  
PRODUCTS TO THE WORLD

**HONGYE FURNITURE GROUP**  
Commercial Furniture **ONE-STOP SOLUTION SUPPLIER**



YouTube



LinkedIn



TikTok



FaceBook



Twitter



Instagram



Pinterest

GUANGDONG HONGYE FURNITURE MANUFACTURING CO., LTD.

China · Jiangmen

Leading Forestry Enterprises in Guangdong Province



Hongye Furniture Group is a furniture company with a history of more than 30 years. It was founded in Yongkang, Zhejiang, and developed in the Sino-Europe (Jiangmen) SME International Cooperation Zone - Heshan Core Area. With a registered capital of 230 million yuan, over 1,000 employees, and an annual tax payments exceeding 10 of millions, the company has built over 300,000 square meters of garden-style factory buildings and a supporting employee village.

The group's business covers more than 200 countries and regions. It currently mainly produces 6 series of furniture: 1. Office furniture series, 2. Hospitality furniture series, 3. Bank furniture series, 4. Medical healthcare furniture series, 5. Education furniture series, 6. Apartment furniture series.

In 2021, Hongye Furniture Group invested in the construction of the Laisu Hongyuan Cultural Tourism Project, actively contributing to the construction of the Greater Bay Area.

DEVELOPMENT HISTORY

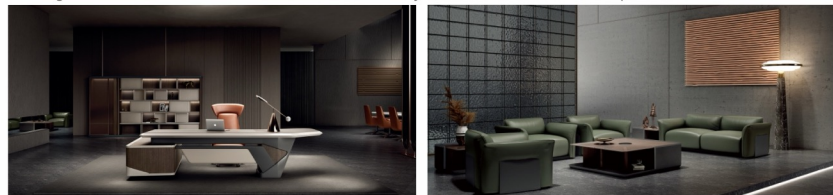
- .....
- 2024 ● Honored as the only newly certified "Guangdong Forestry Leading Enterprise" in Jiangmen City.  
The Lesuhongyuan Cultural Tourism Project was opened to the public.
- 2021-2023 ● Over 50,000 square meters of high-standard factory buildings in Yaogang were put into operation.  
The "Super Five-Star" hotel furniture showroom was opened.  
The high-end commercial furniture showroom was opened.
- 2019-2020 ● The six major series showrooms upgrades.  
The "Juedu" integrated + office furniture brand was launched.  
Signed a 600 million yuan agreement with Heshan Government for the Lesuhongyuan Cultural Tourism Project.
- 2015-2018 ● Won the "Famous Trademark of Guangdong Province" and "Guangdong Province Famous Brand Products".  
Its "Jiangnan" office furniture brand officially launched.  
Successfully acquired two old Taiwan-funded enterprises and transformed them into the hardware factory and soft furniture factory respectively.
- 2011-2014 ● Hongye's workshops for paint, panel, soft furniture, veneer, solid wood, hotel, and carton were put into production.  
Hongye Employee Village and the office building were officially completed.
- 2010.3 ● Guangdong Hongye Furniture Manufacturing Co., Ltd. was officially established.
- 1983 ● Chairman Mr. Wang Hongjie started his business by processing/manufacturing furniture.



## MAIN BUSINESS OF THE GROUP

### Furniture Division

Hongye Group's furniture sector mainly focuses on commercial furniture and high-end customization. Among which commercial furniture includes three major brands and six series of products.



### Hotel Division

Hongye Group has investments in 5 operational hotels, including Hongye - Ziling Hotel, Hongye - Zitian Hotel, Hongye - Taotao Hotel, Hongye - Youyi Hotel, and Hongye - Hongyuan Hotel.



### Cultural Tourism Division

In 2021, Hongye Group and the Heshan government signed an agreement for the Lesuhongyuan Cultural Tourism Project. It opened to the public in 2024.



### Ancient Architecture Division

Inheriting Chinese ancient architecture and promoting Chinese woodworking. Gathering experienced craftsmen and obtaining resources for ancient architecture.



## THE MAIN HONORS THAT THE GROUP HAS RECEIVED IN RECENT YEARS

National high-tech enterprise

Leading forestry enterprises in guangdong province

Guangdong Province famous brand products

Famous trademark in guangdong province

Key trademark protection in guangdong province

Guangdong smart environmental engineering research center

Guangdong Province contract abiding and creditworthy enterprise

Chinese Industrial Innovative advanced enterprises

Specialized, focused, peculiar, and Innovative SMEs

For 14 consecutive years, a major taxpayer in Heshan city

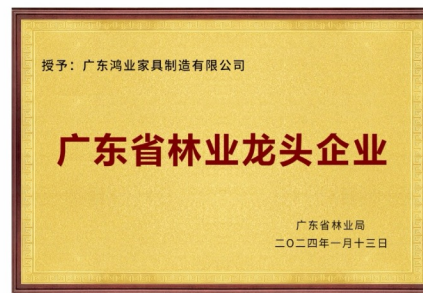
AAA units for quality, service, and integrity

Top 10 Chinese Office Furniture Brands in 2024

Top 10 Hotel Furniture Brands in China in 2024

Top 10 Green Medical and Nursing Furniture Brands in China in 2024

Top 10 Chinese Financial System Furniture Brands in 2024

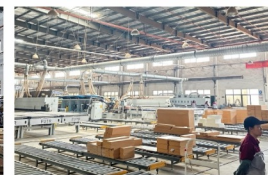




## HONGYE FURNITURE GROUP MODERN INDUSTRIAL PARK



## PARTIAL PRODUCTION WORKSHOPS





## 医用护理病床系列

### Medical nursing bed Series



**KX-856**

双立柱五功能床  
Double electric five-function care bed

规格(Specifications): L2150\*W1030\*H450~720mm  
包装(Packing): 2100\*1000\*580mm



**KX-857**

五功能电动床(PP护栏 Guardrail)  
Electric five-function care bed

规格(Specifications): L2150\*W1030\*H450~740mm  
包装(Packing): 2100\*1000\*510mm



**KX-858**

豪华五功能电动床  
Electric five-function care bed

规格(Specifications): L2150\*W1030\*H450~740mm  
包装(Packing): 2100\*1000\*510mm



**KX-837**

三功能电动床  
Electric three-function care bed

规格(Specifications): 2150\*970\*450~740mm  
包装(Packing): 2100\*960\*510mm



**KX-836**

三功能电动床  
Electric three-function care bed

规格(Specifications): L2220\*W980\*H430/700mm  
包装(Packing): 2100\*1000\*510mm



**KX-827**

二功能电动血透床  
Two-function electric blood transfusion bed

规格(Specifications): L2150\*W970\*H485mm  
包装(Packing): 2030\*940\*230mm



**KX-855**

豪华五功能电动床  
Electric five-function care bed

规格(Specifications): L2150\*W1030\*H450~740mm  
包装(Packing): 2100\*1000\*510mm



**KX-854**

X光背板五功能电动床  
X-ray back board electric five-function care bed

规格(Specifications): L2150\*W1030\*H450~740mm  
包装(Packing): 2100\*1000\*510mm



**KX-853**

四功能电动翻身床  
Electric four-function rolling care bed

规格(Specifications): L2200\*W970\*H580~800mm  
包装(Packing): 2180\*980\*640mm



**KX-818**

一功能电动床  
One function electric bed

规格(Specifications): L2130\*W970\*H485mm  
包装(Packing): 2100\*960\*350mm



**KX-S303**

手动三功能床  
Manual three-function bed

规格(Specifications): L2120\*W1030\*H450~740mm  
包装(Packing): 2100\*1000\*510mm



**KX-S302**

手动三功能床  
Manual three-function bed

规格(Specifications): L2150\*W1030\*H450~740mm  
包装(Packing): 2100\*1000\*510mm



**KX-852**

四功能电动90°座椅床  
Four function electric 90° seat bed

规格(Specifications): L2120\*W970\*H500~780mm  
包装(Packing): 1920\*1000\*600mm



**KX-859**

五功能电动床  
Five-function electric bed

规格(Specifications): L2070\*W970\*H450~740mm  
包装(Packing): 2100\*960\*510mm



**KX-839**

三功能电动床  
Electric three-function care bed

规格(Specifications): L2150\*W1030\*H450~740mm  
包装(Packing): 2100\*1000\*510mm



**KX-S301**

手动三功能床  
Manual three-function bed

规格(Specifications): L2120\*W970\*H450~740mm  
包装(Packing): 2100\*1000\*510mm



**KX-S202**

手动两功能床  
Manual two-function bed

规格(Specifications): L2120\*W1030\*H485mm  
包装(Packing): 2100\*1000\*420mm



**KX-S201**

手动两功能床  
Manual two-function bed

规格(Specifications): L2120\*W970\*H485mm  
包装(Packing): 2140\*1000\*230mm



**KX-838**

豪华三功能电动床  
Electric three-function care bed

规格(Specifications): L2150\*W1030\*H450~740mm  
包装(Packing): 2100\*1000\*510mm



**KX-829**

二功能电动床  
Electric two-function care bed

规格(Specifications): L2120\*W1030\*H450mm  
包装(Packing): 2100\*1000\*420mm



**KX-828**

二功能电动床  
Electric two-function care bed

规格(Specifications): L2150\*W1030\*H485mm  
包装(Packing): 2150\*960\*320 (床架 bedstead)  
720\*340\*320 (护栏 Guardrail)



**KX-S201A**

手动两功能床  
Manual two-function bed

规格(Specifications): L2120\*W970\*H485mm  
包装(Packing): 2040\*940\*230mm



**KX-S201B**

手动两功能床  
Manual two-function bed

规格(Specifications): L2120\*W970\*H485mm  
包装(Packing): 2100\*960\*230mm



**KX-S201C**

手动两功能床  
Manual two-function bed

规格(Specifications): L2120\*W970\*H485mm  
包装(Packing): 2040\*940\*230mm

## 医用护理病床系列

### Medical nursing bed Series



**KX-S201D**

手动两功能床  
Manual two-function bed  
规格(Specifications): L2120\*W970\*H485mm  
包装(Packing): 2030\*910\*350mm



**KX-S201E**

手动两功能床  
Manual two-function bed  
规格(Specifications): L2120\*W970\*H485mm  
包装(Packing): 2040\*940\*230mm



**KX-S201F**

手动两功能床  
Manual two-function bed  
规格(Specifications): L2220\*W980\*H500mm  
包装(Packing): 2040\*940\*230mm



**KX-S232**

ABS双摇血透床  
ABS double-crank dialysis manual care bed  
规格(Specifications): L2120\*W970\*H485mm  
包装(Packing): 2040\*940\*230mm



**KX-S232A**

日式双摇血透床  
Japanese style double shake blood bed  
规格(Specifications): L2120\*W800\*H485mm  
包装(Packing): 2040\*820\*230mm



**KX-S103**

手动一功能床  
Manual function bed  
规格(Specifications): L2120\*W970\*H485mm  
包装(Packing): 2040\*940\*230mm



**KX-S101**

手动一功能床  
Manual function bed  
规格(Specifications): L2120\*W970\*H485mm  
包装(Packing): 2040\*940\*230mm



**KX-S102**

手动一功能床  
Manual function bed  
规格(Specifications): L2220\*W980\*H500mm  
包装(Packing): 2040\*940\*230mm



**KX-S001**

ABS平板护理床  
ABS flat bed care  
规格(Specifications): L2120\*W970\*H485mm  
包装(Packing): 2040\*940\*230mm



**KX-S4032**

ABS手动四功能翻身床  
ABS manual four-crank rolling care bed  
规格(Specifications): L2200\*W970\*H580-800mm  
包装(Packing): 2150\*960\*640mm



**KX-S3033**

ABS手动三功能翻身床  
ABS manual three-crank rolling care bed  
规格(Specifications): L2200\*W970\*H580-880mm  
包装(Packing): 2150\*960\*640mm



**KX-S402**

不锈钢手动四功能翻身床  
Stainless steel manual four function rollover bed  
规格(Specifications): L2000\*W900\*H580-880mm  
包装(Packing): 2100\*960\*640mm



**KX-S306**

不锈钢手动三功能床  
Stainless steel manual three function bed  
规格(Specifications): L2000\*W900\*H450-720mm  
包装(Packing): 2100\*960\*510mm



**KX-S205**

不锈钢手动两功能床  
S.S. Two-crank care bed  
规格(Specifications): L2000\*W900\*H550mm  
包装(Packing): 1960\*960\*140mm



**KX-S204**

不锈钢手动两功能床  
S.S. Two-crank care bed  
规格(Specifications): L2000\*W900\*H550mm  
包装(Packing): 1960\*960\*140mm



**KX-S105**

不锈钢手动一功能床  
S.S. one-crank care bed  
规格(Specifications): L2000\*W900\*H550mm  
包装(Packing): 1960\*960\*130mm



**KX-S105A**

不锈钢手动一功能床  
S.S. one-crank care bed  
规格(Specifications): L2000\*W900\*H550mm  
包装(Packing): 1960\*960\*130mm



**KX-S002**

全不锈钢平床  
S.S. Flat care bed  
规格(Specifications): L2000\*W900\*H550mm  
包装(Packing): 1960\*960\*120mm

### Home Care Bed Series

## 家居护理床系列



**KX-806A-1**

三功能电动超低家居床  
Three-function electric ultra-low home bed  
规格(Specifications): L2080\*W970\*H210-580mm  
包装(Packing): 2040\*940\*250mm



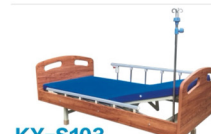
**KX-836B**

三功能电动家居床  
Electric three-function home bed  
规格(Specifications): L2030\*W890\*H205-765mm  
包装(Packing): 2000\*940\*230mm



**KX-836C**

电动折叠家居床  
Electric folding home bed  
规格(Specifications): L1855\*W810\*H290-590mm  
包装(Packing): 1950\*840\*320mm



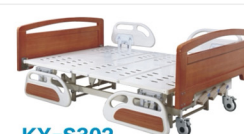
**KX-S103**

手动一功能家居床  
Manual one-function home bed  
规格(Specifications): L2100\*W970\*H500mm  
包装(Packing): 2050\*930\*280mm



**KX-836**

三功能电动家居床  
Electric three-function home bed  
规格(Specifications): L2090\*W1400\*H450-740mm  
包装(Packing): 2100\*1160\*510mm



**KX-S302**

手动三功能家居床  
Manual three-function home bed  
规格(Specifications): L2100\*W1400\*H450-740mm  
包装(Packing): 2050\*1350\*510mm



## 家居、骨科护理床系列 Home&Orthopedic Care Bed Series



### KX-806

电动三功能家居床  
Electric three-function home bed  
规格(Specifications):  
L2090\*W1200\*D350-630mm  
包装(Packing): 2050\*1150\*500mm



### KX-836A

三功能电动家居床  
Electric three-function home care bed  
规格(Specifications):  
L2100\*W960\*D330-720mm  
包装(Packing): 2050\*980\*440mm



### KX-S201G

手动二功能家居床  
Manual two-function home bed  
规格(Specifications):  
L2000\*W1030\*D4500mm  
包装(Packing): 1980\*1000\*280mm



### KX-851A

电动翻身床  
Electric turning bed  
规格(Specifications):  
L2060\*W960\*D4550mm  
包装(Packing):  
床体包装箱: 1500\*970\*430mm  
床头箱: 970\*140\*550mm



### KX-851

手动翻身床  
Manual turning bed  
规格(Specifications):  
L2000\*W900\*D4550mm  
包装(Packing): 2000\*900\*400mm



### KX-548

四摇骨科病床 八字龙门架专利号: 201820079115.8  
Manual four-crank orthopedic care bed  
规格(Specifications):  
L2150\*W970\*D450-740/1850mm  
包装(Packing): 2100\*960\*640mm



### KX-549 (原型号 KX-550)

四摇骨科病床  
Four-crank orthopedic bed  
规格(Specifications):  
L2120\*W970\*D485/1850mm  
包装(Packing): 2100\*960\*450mm



### KX-536 (原型号 KX-549)

三摇骨科病床  
Three-crank orthopedic bed  
规格(Specifications):  
L2120\*W970\*D485mm  
包装(Packing): 2100\*960\*450mm



### KX-533

三摇骨科病床  
Three-crank orthopedic bed  
规格(Specifications):  
L2120\*W970\*D485/1850mm  
包装(Packing): 2100\*960\*450mm



### KX-535

三摇骨科床 八字龙门架专利号: 201820079115.8  
Three rocking department of orthopedics bed  
规格(Specifications):  
L2120\*W970\*D485mm  
包装(Packing): 2100\*960\*320mm



### KX-530

双摇骨科床  
Double rocking department of orthopedics bed  
规格(Specifications):  
L2120\*W970\*D485mm  
包装(Packing): 2100\*960\*350mm



### KX-521 (原型号 KX-531)

双摇骨科床 (单龙门架)  
Double rocking orthopedic bed (single gantry)  
规格(Specifications):  
L2120\*W970\*D485/1850mm  
包装(Packing): 2100\*960\*250mm

## Orthopedics, children's nursing bed series

## 骨科、儿童护理床系列



### KX-546 (原型号 KX-529)

四摇骨科病床  
S.S. four-crank orthopaedics bed  
规格(Specifications): L2000\*W900\*D4550mm  
包装(Packing): 2120\*940\*320mm



### KX-538 (原型号 KX-528)

三摇骨科病床  
S.S. Three-crank orthopaedics bed  
规格(Specifications): L2000\*W900\*D4550mm  
包装(Packing): 2120\*940\*320mm



### KX-522

不锈钢双摇骨科牵引床  
S.S. Two-crank orthopaedics bed  
规格(Specifications): L2000\*W900\*D4550mm  
包装(Packing): 2120\*940\*320mm



### KX-911-1

全密封翻护栏手动三摇儿童床  
Fully sealed flip guardrail manual three children's bed  
规格(Specifications): L1980\*W980\*D480-720mm  
(含护栏 With guardrail)  
包装(Packing): 2100\*960\*450mm



### KX-911-2

全密封翻护栏手动二摇儿童床  
Fully sealed flip guardrail manual two-rocker crib  
规格(Specifications): L1980\*W980\*D480-720mm  
手动三摇床 Manual three shaker: KX-911-2a  
手动单摇床 Manual single bed: KX-911-2b  
手动平板床 Manual flat bed: KX-911-2c  
包装(Packing): 2100\*960\*450mm



### KX-916

栅栏式豪华单摇儿童床  
Deluxe children care bed  
规格(Specifications): L1880\*W960\*D650/1260mm  
包装(Packing): 1920\*940\*380mm



### KX-911

栅栏式豪华单摇儿童床  
Deluxe children care bed  
规格(Specifications):  
L1650\*W800\*D4550/1160mm  
包装(Packing):  
1690\*880\*350mm



### KX-914

豪华平板儿童床  
Deluxe flat children care bed  
规格(Specifications):  
L1600\*W800\*D4550/1020mm  
包装(Packing):  
1640\*820\*240mm



### KX-915

豪华单摇儿童床  
Deluxe manual one-crank children care bed  
规格(Specifications):  
L1600\*W800\*D4550/1120mm  
包装(Packing):  
1640\*820\*240mm



### KX-910

不锈钢儿童床  
Children care bed  
规格(Specifications):  
L1980\*W800\*D4560mm  
包装(Packing):  
1940\*850\*180mm

## 婴儿护理床系列

### Baby Nursing Bed Series



#### KX-R004

ABS升降可倾斜婴儿床  
ABS lift tiltable crib

规格(Specifications): L885\*W810\*H750/960mm  
净盆尺寸(Basin size): 850\*510\*250mm



#### KX-A27

木制婴儿床(带倾斜) 专利号: 201820080232.6  
One function Wooden stroller

规格(Specifications): L845\*W505\*H870mm  
包装(Packing): 865\*525\*890mm



#### KX-A23

钢塑婴儿车  
Steel plastic baby carriage

规格(Specifications): L800\*W480\*H900mm  
包装(Packing): 830\*530\*920mm



#### KX-A26

钢塑豪华婴儿床  
Deluxe baby trolley 专利号: 201820080233.0

规格(Specifications): L820\*W520\*H850mm  
包装(Packing): 850\*550\*860mm



#### KX-R005

婴儿床(带倾斜)  
One function baby trolley

规格(Specifications): L1015\*W575\*H965mm  
包装(Packing): 1040\*605\*980mm



#### KX-A25

钢塑豪华婴儿床  
Deluxe baby trolley

规格(Specifications): L900\*W480\*H1030mm  
包装(Packing): 1190\*490\*870mm



#### KX-A19

不锈钢豪华婴儿床  
Stainless steel baby trolley

规格(Specifications): L800\*W480\*H900mm  
包装(Packing): 830\*510\*930mm



#### KX-A22

全不锈钢可倾斜婴儿床  
S.S. Baby trolley (tilting)

规格(Specifications): L800\*W480\*H900mm  
包装(Packing): 830\*520\*920mm



#### KX-R003

ABS升降可倾斜婴儿床  
ABS lift tiltable crib

规格(Specifications): L905\*W535\*H845mm  
净盆尺寸(Basin size): 870\*460\*250mm



#### KX-A21

全不锈钢婴儿床  
S.S. Baby cot

规格(Specifications): L700\*W445\*H800mm  
包装(Packing): 730\*490\*830mm

### Maternity Bed Operating Bed Examination Bed Series

## 妇产床、手术床、诊查床系列



#### KX-811

电动妇产床  
Electric gynecological table

规格(Specifications): L1780\*W600\*H680-880mm  
包装(Packing): 1400\*800\*910mm



#### KX-811A

电动妇产床  
Electric gynecological table

规格(Specifications): L1400\*W600\*H700-1000mm  
包装(Packing): 1400\*800\*910mm



#### KX-820A

电动手术台  
Electric operation table

规格(Specifications): L2070\*W480\*H650-850mm  
包装(Packing): 1300\*670\*870mm



#### KX-734

多功能产床  
Multi-function delivery table

规格(Specifications): L1750\*W600\*H650-920mm  
包装(Packing): 1350\*870\*990mm



#### KX-728

综合手术台  
Integrative operation table

规格(Specifications): L2100\*W480\*H780/1020mm  
包装(Packing): 1300\*670\*920mm



#### KX-820

电动手术床  
Electric operation table

规格(Specifications): L2070\*W480\*H650-850mm  
包装(Packing): 1300\*670\*870mm



#### KX-735

多功能妇产床(分体式)  
S.S. Integrative gynaecological table

规格(Specifications): L1900\*W620\*H750mm  
包装(Packing): 1350/650\*700\*850mm 各一箱



#### KX-732

妇科检查床(带柜无门)  
General S.S. delivery table

规格(Specifications): L1900\*W620\*H750mm  
包装(Packing): 1350/650\*700\*850mm 各一箱



#### KX-731

全不锈钢妇科检查床  
S.S. Gynaecological table

规格(Specifications): L1900\*W580\*H750mm  
包装(Packing): 1300\*600\*780mm



#### KX-007

不锈钢洗胃床  
Stainless steel gastric lavage bed

规格(Specifications): L1900\*W600\*H650mm  
包装(Packing): 1960\*760\*710mm



#### KX-005A

电动诊查床  
Electric examination bed

规格(Specifications): L1900\*W650\*H450-800mm  
包装(Packing): 1920\*660\*560mm



#### KX-002

带提背诊查床  
Examination table with adjustable backrest

规格(Specifications): L1900\*W650\*H650mm  
包装(Packing): 1950\*660\*250mm 两件/包



#### KX-001

无提背诊查床  
Flat examination table

规格(Specifications): L1900\*W650\*H650mm  
包装(Packing): 1920\*660\*300mm 两件/包



#### KX-006

不锈钢诊查床  
Stainless steel examination table

规格(Specifications): L1900\*W650\*H650mm  
包装(Packing): 2080\*680\*490mm 两件/包



#### KX-006A

钢塑按摩床  
Steel massage bed

规格(Specifications): L1900\*W650\*H650mm  
包装(Packing): 1920\*660\*150mm



## 救护担架车系列

Ambulance Stretcher Vehicle Series



### KX-2032

ABS担架车 (手拖式)  
ABS Stretcher(hand travelling type)  
规格(Specifications): L1930\*W640\*H500~900mm  
包装(Packing): 1960\*760\*700mm



### KX-2032A

豪华液压升降平车  
Luxurious hydraulic rise-and-fall stretcher cart  
规格(Specifications): L2120\*W800\*H630~930mm  
包装(Packing): 2160\*860\*760mm



### KX-2133

液压担架车  
Hydraulic stretcher car  
规格(Specifications): L2130\*W830\*H630~950mm  
包装(Packing): 2170\*890\*780mm



### KX-2032B

ABS豪华担架车 (液压式)  
ABS luxury stretcher car (hydraulic)  
规格(Specifications): L1930\*W700\*H630~930mm  
包装(Packing): 1990\*710\*690mm



### KX-2132

豪华液压升降平车  
Jointing stretcher for operation room  
规格(Specifications): L3650\*W640\*H640~970mm  
包装(Packing): 1960\*700\*620mm



### KX-B04A

铝合金担架车  
Aluminum loading ambulance stretcher  
规格(Specifications): L1900\*W550\*H250/920mm  
包装(Packing): 1950\*620\*255mm



### KX-B05

铝合金担架车  
Emergency bed  
规格(Specifications): L1900\*W550\*H540/880mm  
包装(Packing): 1950\*620\*340mm



### KX-B05A

铝合金担架推车  
Aluminum loading ambulance stretcher  
规格(Specifications): L1900\*W550\*H540/880mm  
包装(Packing): 1950\*620\*340mm



### KX-B06

桶式担架  
Aluminum loading ambulance stretcher  
规格(Specifications): L1960\*550\*250/860mm  
包装(Packing): 1980\*620\*260mm

Ambulance Stretcher Vehicle Series

## 救护担架车系列



### KX-B01

四小轮担架车  
S.S. Stretcher (small castors)  
规格(Specifications): L1900\*W550\*H700mm  
包装(Packing): 1930\*610\*740mm



### KX-B01A

大轮担架车  
S.S. Stretcher (big wheels)  
规格(Specifications): L1900\*W550\*H700mm  
包装(Packing): 1950\*600\*760mm



### KX-B01B

折叠担架  
Folding stretcher  
规格(Specifications): L1890\*W640\*H710mm  
包装(Packing): 710\*630\*1280mm



### KX-B02

三功能手摇急诊床车  
Manual three-crank emergency stretcher  
规格(Specifications): L1950\*W750\*H550/820mm  
包装(Packing): 1980\*780\*600mm



### KX-B03A

不锈钢急诊拖车  
Stainless steel emergency trailer  
规格(Specifications): L1900\*W500\*H400mm  
包装(Packing): 1920\*550\*430mm



### KX-B04

手摇急诊床车  
S.S. manual emergency stretcher  
规格(Specifications): L2010\*W570\*H550/800mm  
包装(Packing): 2050\*600\*580mm



### KX-2112

不锈钢对接床车  
S.S. Joint stretcher  
规格(Specifications): L3600\*W570\*H550/800mm  
包装(Packing): 1960\*760\*560 (两箱)



### KX-1F1

铝合金折叠担架  
Aluminum loading ambulance stretcher  
规格(Specifications):  
展开 (Unfolded): L2080\*W550\*H130mm  
折叠 (Fold): L1040\*W170\*H90mm  
包装(Packing): 1080\*185\*180mm



### KX-4A

铝合金铲式担架  
Scoop stretcher  
规格(Specifications):  
展开 (Unfolded): L2100\*W440\*H60mm  
折叠 (Fold): L1200\*W440\*H90mm  
包装(Packing): 1700\*460\*80mm



### KX-4E

软担架  
Soft stretcher  
规格(Specifications): L1870\*W420\*H60mm  
包装(Packing): 880\*240mm



### KX-1F2

铝合金折叠担架  
Aluminum loading ambulance stretcher  
规格(Specifications):  
展开 (Unfolded): L2140\*W550\*H120mm  
折叠 (Fold): L880\*W210\*H140mm  
包装(Packing): 670\*300\*170mm

## 多功能护理车系列

### Nursing Cart Series

#### KX-MT850

急救车  
Emergency cart

规格(Specifications): L850\*W520\*H950mm  
包装(Packing): 880\*550\*980mm

#### KX-ET85001A

急救车  
Emergency cart

规格(Specifications): L850\*W520\*H950mm  
包装(Packing): 880\*550\*980mm

#### KX-ET85001E1

急救车  
Emergency cart

规格(Specifications): L850\*W520\*H950mm  
包装(Packing): 880\*550\*980mm

#### KX-ITT850C

急救车  
Emergency cart

规格(Specifications): L850\*W520\*H950mm  
包装(Packing): 880\*550\*980mm

#### KX-320D

全ABS豪华抢救车  
Emergency cart

规格(Specifications): L1630\*W470\*H910mm  
包装(Packing): 720\*560\*870mm

#### KX-85001A

双排麻醉车  
Double row anesthesia car

规格(Specifications): L850\*W520\*H950mm  
包装(Packing): 880\*550\*980mm

#### KX-380D

全ABS豪华麻醉车  
Deluxe anesthetic trolley

规格(Specifications): L1630\*W470\*H920mm  
包装(Packing): 720\*560\*930mm

#### KX-12F2

双排麻醉车  
Edouble row anesthesia cart

规格(Specifications): L1630\*W470\*H920mm  
包装(Packing): 720\*560\*930mm

#### KX-12B1

ABS急救车  
Emergency cart

规格(Specifications): L1630\*W470\*H920mm  
包装(Packing): 720\*560\*930mm

#### KX-12F

ABS急救车  
Emergency cart

规格(Specifications): L1630\*W470\*H920mm  
包装(Packing): 720\*560\*930mm

#### KX-12D1-1-1

ABS治疗车  
Treatment cart

规格(Specifications): L1630\*W470\*H920mm  
包装(Packing): 720\*560\*930mm

#### KX-12D3-1

ABS治疗车  
Treatment cart

规格(Specifications): L1630\*W470\*H920mm  
包装(Packing): 720\*560\*930mm

#### KX-12D-3

ABS治疗车  
Treatment cart

规格(Specifications): L1630\*W470\*H920mm  
包装(Packing): 720\*560\*930mm

#### KX-12D-2

ABS治疗车  
Treatment cart

规格(Specifications): L1630\*W470\*H920mm  
包装(Packing): 720\*560\*930mm

#### KX-310C

全ABS豪华治疗车  
Dressing trolley

规格(Specifications): L1630\*W470\*H920mm  
包装(Packing): 720\*560\*930mm

### Nursing Cart Series

## 多功能护理车系列

#### KX-310C-1

全ABS输液车 (换药车)  
Infusion trolley

规格(Specifications): L630\*W470\*H910mm  
包装(Packing): 720\*560\*870mm

#### KX-202C

塑钢治疗车  
Treatment trolley

规格(Specifications): L720\*W460\*H900mm  
包装(Packing): 740\*460\*270mm

#### KX-202

塑钢治疗车  
Treatment trolley

规格(Specifications): L720\*W460\*H900mm  
包装(Packing): 740\*460\*240mm

#### KX-B58

全量钢豪华麻醉车  
Deluxe anesthetic trolley

规格(Specifications): L665\*W475\*H1000\*500mm  
包装(Packing): 770\*550\*1000mm

#### KX-B52A

全量钢抢救车  
Emergency trolley

规格(Specifications): L650\*W460\*H1010mm  
包装(Packing): 780\*460\*890mm

#### KX-B25

不锈钢急救车型  
I style S.S.emergency trolley

规格(Specifications): L650\*W460\*H850mm  
包装(Packing): 750\*450\*740mm

#### KX-B23

不锈钢送药车(双抽)  
S.S. Double-drawer medicine trolley

规格(Specifications): L600\*W480\*H800\*80mm  
包装(Packing): 640\*490\*920mm

#### KX-B26

不锈钢急救车型II型  
II style S.S.emergency trolley

规格(Specifications): L650\*W420\*H850mm  
包装(Packing): 780\*460\*730mm

#### KX-B27

不锈钢急救车型III型  
III style S.S.emergency trolley

规格(Specifications): L650\*W420\*H850mm  
包装(Packing): 780\*460\*730mm

#### KX-B45

ABS麻醉车  
ABS anesthesia car

规格(Specifications): L720\*W460\*H900mm  
包装(Packing): 660\*580\*860mm

#### KX-B46

ABS送药车  
Medicine serving trolley

规格(Specifications): L720\*W425\*H935\*80mm  
包装(Packing): 860\*540\*900mm

#### KX-B13

ABS治疗车 (双抽)  
Treatment trolley (double drawer)

规格(Specifications): L720\*W460\*H800\*80mm  
包装(Packing): 740\*460\*830mm

#### KX-C01A

全ABS病历车  
ABS patient record trolley

规格(Specifications): L404\*W404\*H1090mm(30格)  
L756\*W406\*H1038mm(50格)  
包装(Packing): 910\*490\*910mm

#### KX-C55

40格全量钢病历车  
ABS patient recorder trolley

规格(Specifications): L670\*W425\*H1030mm  
包装(Packing): 790\*460\*920mm

#### KX-C01

不锈钢病历柜车  
S.S. Patient record trolley

规格(Specifications): 20格: L330\*W400\*H880mm  
30格: L660\*W400\*H1135mm  
40格: L660\*W400\*H880mm  
50格: L660\*W400\*H990mm  
60格: L660\*W400\*H1135mm  
包装(Packing): 760\*430\*1000mm



## 床边桌系列

### Bedside Table Series

KX-D05G



KX-D05H



KX-D05D



KX-D05F



KX-D05B



KX-D05C



KX-D05E



KX-D05A



美化板、床上桌  
Over bed table

规格(Specifications): L800\*W400\*H750-1000mm  
包装(Packing): 880\*510\*470两台/包

## 医用器皿系列

### Medical Vessel Series

KX-Q42

不锈钢消毒盒  
S.S. Sterilizing box

规格(Specifications): 9寸 有孔/无孔  
12寸 有孔/无孔  
包装(Packing): 9寸280\*280\*180四件/包  
12寸350\*280\*230四件/包



KX-Q43

不锈钢腰子盘  
S.S. Kidney plate

规格(Specifications): L250\*W132\*H50mm (大号)  
L210\*W109\*H44mm (中号)  
L172\*W97\*H38mm (小号)  
包装(Packing): 280\*160\*180十件/包  
240\*130\*160十件/包  
200\*120\*150十件/包



KX-Q44

不锈钢治疗盘  
S.S. Therapia boc

规格(Specifications): L330\*W198\*H50mm  
包装(Packing): 360\*220\*230四件/包



KX-Q46

不锈钢消毒盒  
S.S. Sterilizing box

规格(Specifications): L240\*W130\*H25mm (大号)  
L190\*W116\*H25mm (中号)  
L178\*W104\*H25mm (小号)  
包装(Packing): (大) 270\*160\*260十件/包



KX-Q48

不锈钢倒推型镊子筒  
Nippers can (back taper)

规格(Specifications): L80\*W195mm (大号)  
L64\*W150mm (中号)  
L45\*W105mm (小号)  
包装(Packing): (大) 680\*290\*200十件/包



KX-Q49

贮槽 (引伸型)  
S.S. Cupboard

规格(Specifications): ΦL170\*W128mm  
ΦL200\*W145mm  
ΦL230\*W156mm  
ΦL260\*W175mm  
包装(Packing): (大) 280\*280\*200mm



KX-Q50

不锈钢医用方盘  
S.S. Square plate

规格(Specifications): ΦL230\*W140\*H30mm (有盖)  
ΦL230\*W170\*H30mm  
ΦL310\*W240\*H30mm  
ΦL440\*W300\*H30mm  
包装(Packing): (大) 470\*330\*100十件/包



KX-Q51

不锈钢消毒盘  
S.S. Medicine plate

规格(Specifications): L160\*W96mm (大号)  
L142\*W50mm (中号)  
L125\*W40mm (小号)  
包装(Packing): 180\*180\*140十件/包



KX-Q54

不锈钢药缸  
S.S. Mixer

规格(Specifications): ΦL160\*W96mm  
ΦL100\*W90mm  
ΦL100\*W80mm  
包装(Packing): (大) 230\*550\*110十件/包



KX-B10

不锈钢三层器械车  
S.S. Three-shelf trolley

规格(Specifications): L650\*W420\*H800+80mm  
包装(Packing): 750\*440\*780mm



KX-B07

双层器械车  
S.S. Two-shelf trolley

规格(Specifications): L700\*W450\*H800+80mm(大号)  
L650\*W420\*H800+80mm(中号)  
L500\*W400\*H800+80mm(小号)  
包装(Packing): 800\*440\*790mm  
750\*440\*780mm  
600\*420\*790mm



KX-B12

不锈钢治疗车  
S.S. Single-drawer trolley

规格(Specifications): L700\*W450\*H800+80mm  
L650\*W420\*H800+80mm  
L500\*W400\*H800+80mm  
包装(Packing): 800\*480\*800mm 大  
750\*450\*800mm 中  
600\*430\*800mm 小



KX-B11

不锈钢双抽治疗车  
S.S. Double-drawer trolley

规格(Specifications): L700\*W450\*H800+80mm(大号)  
L650\*W420\*H800+80mm(中号)  
包装(Packing): 790\*470\*810mm 大  
740\*440\*810mm 中



KX-B15

不锈钢麻醉车(凹面)  
S.S. Anesthesia trolley

规格(Specifications): L500\*W400\*H800mm  
包装(Packing): 500\*400\*830mm



KX-B22

不锈钢翻斗送药车(60格)  
S.S. Medicine trolley

规格(Specifications): L600\*W450\*H900mm  
包装(Packing): 700\*420\*800mm



KX-B52

栅管式回收被服运输车  
S.S. transport trolley

规格(Specifications): L1200\*W800\*H820mm  
包装(Packing): 1430\*850\*950mm



KX-B53

栅管式简易被服回收车  
S.S. Transport trolley(simple design)

规格(Specifications): L1000\*W700\*H900mm  
包装(Packing): 1030\*730\*810mm



KX-B54

大轮全封闭被服运输车  
S.S. Deluxe transport trolley

规格(Specifications): L1140\*W820\*H930mm  
包装(Packing): 1240\*900\*950mm



KX-B09

扇形器械车  
S.S. Scalloped trolley

规格(Specifications): L1400\*W450\*H800+80mm  
包装(Packing): 1430\*640\*790mm



KX-B16

不锈钢清创车  
S.S. Cleaning trolley

规格(Specifications): L800\*W400\*H800mm  
包装(Packing): 830\*430\*700mm



KX-B18

不锈钢清创车  
S.S. Cleaning trolley

规格(Specifications): L500\*W400\*H800mm  
包装(Packing): 520\*420\*800mm



KX-B28

不锈钢两层被服车  
S.S. Two-shelf transport trolley

规格(Specifications): L900\*W500\*H800mm  
包装(Packing): 1010\*520\*730mm



KX-B41

不锈钢平板推车  
S.S. Flat cart with side rails

规格(Specifications): L800\*W500\*H200mm  
包装(Packing): 820\*520\*320mm



KX-B41A

不锈钢平板推车  
S.S. Flat cart with side rails

规格(Specifications): L800\*W500\*H200mm  
包装(Packing): 830\*520\*480mm



## 推车系列

### Cart Series

#### KX-B42

不锈钢手术升降台车  
S.S. Surgical table

规格(Specifications): L450\*W350\*H800~1250mm  
包装(Packing): 830\*690\*400mm 两件/箱

#### KX-B42B

不锈钢升降手术盒架  
S.S. Surgical table

规格(Specifications): L700\*W430\*H800~1250mm  
包装(Packing): 730\*460\*700mm

#### KX-B29

不锈钢开水瓶推车  
S.S. Hot water trolley

规格(Specifications): L870\*W544\*H800mm  
包装(Packing): 970\*570\*700mm

#### KX-B33

不锈钢全封闭储藏运输车  
S.S. Stock trolley

规格(Specifications): L900\*W600\*H800mm  
包装(Packing): 1100\*620\*690mm

#### KX-B34

不锈钢污物车  
S.S. Dirty linen trolley

规格(Specifications): L550\*W530\*H800mm  
包装(Packing): 570\*570\*700mm

#### KX-B35

不锈钢护理车  
S.S. Clean linen trolley

规格(Specifications): L930\*W480\*H900mm  
包装(Packing): 960\*510\*810mm

#### KX-B38

不锈钢氧气瓶推车  
S.S. Oxygen trolley

规格(Specifications): L430\*W500\*H1300mm  
包装(Packing): 430\*430\*1260mm

#### KX-B36A

钢塑污物车  
Steel plastic dirt vehicle

规格(Specifications): L1590\*W430\*H890mm  
包装(Packing): 700\*480\*790mm

#### KX-B36

钢塑污物车  
Steel plastic dirt vehicle

规格(Specifications): L1810\*W590\*H890mm  
包装(Packing): 920\*700\*790mm

#### KX-201G

ABS小推车  
ABS Trolley

规格(Specifications): L710\*W445\*H830mm  
L820\*W520\*H910mm  
包装(Packing): 680\*470\*190mm  
800\*534\*290mm

#### KX-101H

ABS小推车  
ABS Trolley

规格(Specifications): L600\*W370\*H830mm  
L710\*W445\*H830mm  
包装(Packing): 580\*410\*235mm  
680\*470\*260mm

#### KX-101K

ABS小推车  
ABS Trolley

规格(Specifications): L600\*W370\*H830mm  
包装(Packing): 580\*410\*235mm

#### KX-201K

ABS小推车  
ABS Trolley

规格(Specifications): L710\*W445\*H830mm  
L820\*W520\*H912mm  
包装(Packing): 680\*470\*260mm  
800\*534\*292mm

#### KX-201M

ABS小推车  
ABS Trolley

规格(Specifications): L710\*W445\*H830mm  
包装(Packing): 680\*470\*290mm

#### KX-201N

ABS小推车  
ABS Trolley

规格(Specifications): L710\*W445\*H830mm  
L820\*W520\*H910mm  
包装(Packing): 680\*470\*290mm  
800\*534\*260mm

### Medicine cabinet series

## 药柜系列

#### KX-C20

双面中药调剂柜  
Double-face chinese medicine cupboard

规格(Specifications):  
L1980\*W500/1200\*H900+1080mm  
包装(Packing): 2080\*580\*1160mm 一箱  
2080\*680\*980mm 两箱

#### KX-C20A

单面中药调剂柜  
Single-face chinese medicine cupboard

规格(Specifications):  
L1980\*W300/600\*H900+1080mm  
包装(Packing): 2080\*380\*980mm 一箱  
2080\*680\*1160mm 一箱

#### KX-C36

家居式中药柜  
Household type medicine cabinet

规格(Specifications):  
L2035\*W380/600\*H900+915mm  
包装(Packing): 2120\*460\*1000mm  
2120\*680\*980mm

#### KX-C46

单面中药调剂柜  
Single-sided medicine cabinet

规格(Specifications):  
L1980\*W300/600\*H1980mm  
包装(Packing): 2060\*380\*1160mm  
2060\*680\*980mm

#### KX-C18

组合式西药调剂柜  
Western medical cabinet unit

规格(Specifications): L4500\*W1700\*2\*H900+1080mm  
包装(Packing): 1280\*680\*2060mm 一箱  
1180\*680\*2060mm 五箱

#### KX-C17

双面西药调剂柜  
Double-face western medicine cabinet

规格(Specifications):  
L1900\*W700/1100\*H900+1080mm  
包装(Packing): 1980\*780\*1160mm 一箱  
1980\*630\*980mm 两箱

#### KX-C17B

单面西药调剂柜  
Chinese medicine cabinet

规格(Specifications):  
L1980\*W350/550\*H900+1080mm  
包装(Packing): 1980\*430\*1160mm

#### KX-C19

立式中药柜  
Chinese medicine cabinet

规格(Specifications):  
L980\*W400\*H1980mm  
包装(Packing): 1060\*480\*2060mm

#### KX-C45

立式中药柜  
Chinese medicine cabinet

规格(Specifications): L980\*W400\*H1980mm  
包装(Packing): 1060\*480\*2060mm

#### KX-C34

双面中药调剂柜  
Double-face chinese medicine cupboard

规格(Specifications):  
L1500\*W800/1300\*H900+1080mm  
包装(Packing): 1580\*730\*980mm 两箱  
1530\*880\*1160mm 一箱

#### KX-C31

不锈钢试验台  
Stainless steel laboratory table

规格(Specifications):  
L3000\*W1200/250\*H900+1080mm  
包装(Packing): 1580\*330\*1160mm 两箱  
1580\*680\*980mm 四箱

#### KX-C17A

双面西药调剂柜  
Double-face western medicine cabinet

规格(Specifications):  
L1900\*W200/1000\*H900+1080mm  
包装(Packing): 1980\*380\*1160mm 一箱  
1980\*580\*980mm 两箱

#### KX-C09

不锈钢治疗柜  
S.S. Medicine cabinet

规格(Specifications):  
L1200/1500\*W250/500\*H900+1080mm  
包装(Packing): 1280/1580\*580\*2060mm

#### KX-C10

水剂调剂柜  
S.S. Cabinet for infusion

规格(Specifications):  
L1200/1500\*W250/500\*H900+1080mm  
包装(Packing): 1280/1580\*580\*2060mm

#### KX-C33

贵重药品柜  
Medicine Locker

规格(Specifications): L980\*W400\*H1980mm  
包装(Packing): 1060\*480\*2060mm

#### KX-C07

不锈钢器械柜  
S.S. Medicine cabinet

规格(Specifications): L900\*W400\*H1750mm  
包装(Packing): 980\*480\*1830mm



## 药柜系列

### Medicine cabinet series

#### KX-C08

##### 不锈钢无菌室器械柜

Sterilizing room treatment cabinet

规格(Specifications): L980\*W450\*H1980mm

包装(Packing): 1060\*530\*2060mm

#### KX-C08B

##### 不锈钢器械柜

S.S. Medicine cabinet

规格(Specifications): L900\*W400\*H1750mm

包装(Packing): 980\*480\*1830mm

#### KX-C08A

##### 不锈钢五层器械柜

S.S. Treatment cabinet

规格(Specifications): L980\*W450\*H1980mm

包装(Packing): 1060\*530\*2060mm

#### KX-C32

##### 百折门药架

Medicine cabinet

规格(Specifications): L1000\*W420\*H1980mm

包装(Packing): 1080\*500\*2060mm

1080\*500\*1100mm/1080\*500\*800mm

#### KX-C32A

##### 百折门药架

Medicine cabinet

规格(Specifications): L1000\*W420\*H1980mm

1000\*W420\*H1020mm

1000\*W420\*H720mm

包装(Packing): 1080\*500\*2060mm

1080\*500\*1100mm

1080\*500\*800mm

#### KX-C22

##### 可调双斗成药架

Adjustable double bucket medicine rack

规格(Specifications): L980\*W500\*H1980mm

包装(Packing): 1060\*580\*2060mm

#### KX-C22A

##### 单向可调式药盘架

One-way adjustable medicine tray rack

规格(Specifications): L1200\*W460\*H2000mm

包装(Packing): 1280\*540\*2080mm

#### KX-C22B

##### 双向可调式药盘架

Two-way adjustable drug plate

规格(Specifications): L800\*W860\*H2000mm

包装(Packing): 830\*430\*830mm两箱

2030\*830\*90mm一箱

#### KX-C24

##### 单面六层成药架

Medicine shelf (six layers)

规格(Specifications): L900\*W400\*H1980mm

包装(Packing): 930\*430\*240mm

2030\*930\*90mm

#### KX-C23

##### 成药架

Medicine shelf

规格(Specifications): L980\*W400\*H1980mm

包装(Packing): 1010\*430\*200mm

#### KX-C23B

##### 网式双面西药架

Double-face western medicine shelf

规格(Specifications): L900\*W450\*H1500/1800/2000mm(单面)

L900\*W830\*H1500/1800/2000mm(双面)

包装(Packing): 930\*480\*380mm一箱

2030\*930\*90mm一箱

#### KX-C39

##### 无门药架

Two-way adjustable drug plate

规格(Specifications): L980\*W400\*H1980mm

包装(Packing): 1060\*480\*2060mm

#### KX-C23A

##### 库房成药柜

Shelf for medicine

规格(Specifications): L1000/1500\*W500\*H1980mm

包装(Packing): 1030/1530\*530\*310mm一箱

2030\*150\*90mm一箱

#### KX-C23E

##### 栅栏式固定药架

Shelf for goods

规格(Specifications): L900/1200/1500\*W600\*H1800mm

包装(Packing): 930/1230/1530\*630\*1830mm

#### KX-C05

##### 不锈钢豪华自动感应洗手槽

Luxurious automatic washing sink

规格(Specifications): L1600\*W650\*H900+1000mm

包装(Packing): 1680\*810\*1080mm

#### KX-C02

##### 不锈钢自动感应洗手柜

Automatic washing sink

规格(Specifications): L1600-1800\*W600\*H850+360mm

包装(Packing): 1680/1880\*680\*1290mm

### Medicine cabinet, bedside cabinet series

## 药柜、床头柜系列

#### KX-C03

##### 不锈钢胃肠镜消毒槽

I style sterilized sink for gastrointestinal

规格(Specifications):

L1600/1800\*W420\*H800mm(三槽)

L1800/2000\*W550\*H800mm(四槽)

包装(Packing): 1680/1880\*500\*880mm

1880/2080\*630\*880mm

#### KX-C06

##### 不锈钢清洗盆台柜

Cabinet with sanitary basins

规格(Specifications):

L1900\*W600\*H800+150mm

包装(Packing): 1980\*680\*1030mm

#### KX-C06A

##### 不锈钢洗涤台 (三槽)

S.S. Washing unit(three sinks)

规格(Specifications):

L1800\*W600\*H800+150mm

包装(Packing): 1880\*680\*1030mm

#### KX-C13

##### 地柜

S.S. Cabinet

规格(Specifications):

L1200\*W500\*H900mm(三门三抽)

L1500\*W500\*H900mm(四门四抽)

包装(Packing): 1280/1580\*580\*980mm

#### KX-C14

##### 电脑发药台

Computer distributing desk

规格(Specifications):

L1200/1400\*W600\*H800mm

包装(Packing): 1280/1480\*680\*880mm

#### KX-C11B

##### 不锈钢工作台

S.S. Working table

规格(Specifications):

L1200/1400\*W750\*H800mm

包装(Packing): 1280/1480\*830\*880mm

#### KX-C40

##### 发药台

Dispensing table

规格(Specifications):

L1200/1500\*W600\*H800mm

包装(Packing): 1280/1580\*680\*880mm

#### KX-C25

##### 床头柜

Bedside cabinet

规格(Specifications): L480\*W480\*H760mm

包装(Packing): 500\*500\*780mm

#### KX-C25A

##### 床头柜

Bedside cabinet

规格(Specifications): L480\*W480\*H760mm

包装(Packing): 500\*500\*780mm

#### KX-C26

##### 床头柜

Bedside cabinet

规格(Specifications): L480\*W480\*H880mm

包装(Packing): 500\*500\*900mm

#### KX-C27

##### 床头柜

Bedside cabinet

规格(Specifications): L480\*W410\*H880mm

包装(Packing): 520\*430\*810mm

#### KX-C303

##### 钢塑床头柜

Bedside cabinet

规格(Specifications): L450\*W440\*H900mm

包装(Packing): 500\*480\*920mm

#### KX-C28

##### 床头柜V型 (无后斗)

Stainless steel bedside cabinet

规格(Specifications): L400\*W420\*H760mm

包装(Packing): 420\*430\*780mm

#### KX-C29

##### 床头柜V型 (有后斗)

Stainless steel bedside cabinet

规格(Specifications): L400\*W420\*H760mm

包装(Packing): 470\*620\*770mm

#### KX-C30

##### 木质床头柜

Wooden bed side cabinet

规格(Specifications): L480\*W480\*H760mm

包装(Packing): 500\*500\*770mm

#### KX-C304

##### 豪华吹塑床头柜

Luxury blow molding bedside table

规格(Specifications): L480\*W460\*H800mm

包装(Packing): 500\*480\*820mm

#### KX-C31

##### 木制床头柜

Wooden bedside table

规格(Specifications): L400\*W420\*H760mm

包装(Packing): 430\*450\*790mm

## 输液椅、陪护椅系列

## Infusion Chair, Accompanying Chair Series



### KX-D43

输液椅

Waiting chair

规格(Specifications):  
L1660\*W730\*H430/860mm (一人位)  
L1280\*W730\*H430/860mm (二人位)  
L1900\*W730\*H430/860mm (三人位)  
L2520\*W730\*H430/860mm (四人位)  
L3140\*W730\*H430/860mm (五人位)



### KX-D32

输液椅 (三人位)

Infusion chair (three seats)

规格(Specifications): L1240\*W1860\*H2480mm  
包装(Packing): 2160\*600\*700mm 两台/箱  
810\*510\*990mm 两台/箱



### KX-D36

输液椅

Waiting chair

规格(Specifications): L1890\*W610\*H1010mm  
包装(Packing): 1920\*640\*1040mm



### KX-D42

输液椅

Waiting chair

规格(Specifications):  
L1990\*W660\*H420/800mm (三人位)



### KX-D35

输液椅 (钢塑)

Waiting chair

规格(Specifications):  
L2250\*W790\*H360/830mm (三人位)  
L1540\*W790\*H360/830mm (两人位)  
L840\*W790\*H360/830mm (单人位)  
包装(Packing): 1150\*550\*980床板  
700\*600\*120床板



### KX-D33

候诊椅

Waiting chair three seats

规格(Specifications):  
L1800\*W600\*H450/800mm  
包装(Packing): 1850\*750\*750mm 两件/包



### KX-D44

候诊椅

Waiting chair three seats

规格(Specifications):  
L1750\*W710\*H405/900mm (三人位)  
L2320\*W710\*H405/900mm (四人位)  
L2890\*W710\*H405/900mm (五人位)



### KX-D38

舒适输液椅

Steel infusion chair

规格(Specifications): L840\*W760\*H450/1060mm  
包装(Packing): 1120\*770\*1210mm 两个/包



### KX-D38A

不锈钢带边撑输液椅

Stainless steel infusion chair

规格(Specifications):  
L840\*W660\*H450/1060mm  
包装(Packing):  
1120\*710\*1210mm 两个/包



### KX-D38B

不锈钢带边撑输液椅 (宽扶手)

Stainless steel infusion chair

规格(Specifications):  
L920\*W795\*H450/1060mm  
包装(Packing):  
1120\*730\*1280mm 两个/包



### KX-D41

舒适输液椅

Steel infusion chair

规格(Specifications):  
L800\*W760\*H450/1060mm  
包装(Packing):  
1030\*760\*1410mm 两个/包



### KX-D38C

舒适输液椅

Steel infusion chair

规格(Specifications):  
L920\*W720\*H450/1060mm  
包装(Packing):  
1120\*730\*1280mm 两个/包



### KX-D90

豪华固定型输液椅

Deluxe fixed infusion chair

规格(Specifications):  
L920\*W795\*H460mm  
包装(Packing):  
1120\*730\*1280mm 两个/包



### KX-D88

豪华固定型输液椅

Deluxe fixed infusion chair

规格(Specifications):  
L920\*W795\*H460mm  
包装(Packing):  
1120\*730\*1280mm 两个/包



### KX-D91

舒适输液椅

Comfortable infusion chair

规格(Specifications):  
L730\*W900\*H1050mm  
包装(Packing):  
930\*320\*610mm



### KX-D40

陪护椅 (塑钢)

Sleeping chair

坐姿(Sitting position):  
L800\*W620\*H930mm  
卧姿(Lying position):  
L1800\*W620\*H730mm  
包装(Packing):  
890\*720\*1560mm 2件/包



### KX-D40A

盟钢欧式陪护椅

European style accompanying chair (brown)

坐姿(Sitting position):  
L700\*W550\*H400/930mm  
卧姿(Lying position):  
L1850\*W700\*H400/930mm  
包装(Packing):  
1360\*670\*1050mm 2件/包



### KX-D40B

盟钢陪护椅 (深蓝色)

Sleeping chair style steel powder coated chair (dark blue)

坐姿(Sitting position):  
L610\*W820\*H370/930mm  
卧姿(Lying position):  
L850\*W610\*H370/930mm  
包装(Packing):  
890\*720\*1560mm 2件/包



### KX-D37

陪护椅

Sleeping chair

规格(Specifications): L820\*W650\*H450/1060mm  
包装(Packing): 860\*660\*1350mm 两个/包



### KX-D14A

不锈钢轻便牙科椅

Stainless steel lightweight dental chair

规格(Specifications): L680\*W520\*H1200mm  
包装(Packing): 660\*670\*960mm



### KX-D16

靠背转椅 (镀铬)

Whirl stool with backrest

规格(Specifications): Φ340\*460/590mm  
包装(Packing): 460\*460\*460mm 两个/包



### KX-D54

医师椅 (靠背转椅)

Physician chair (backrest swivel chair)

规格(Specifications): 490\*450\*560~700mm  
包装(Packing): 620\*620\*620mm



### KX-D45

医生转椅

Doctor swivel chair

规格(Specifications): Φ370\*450/570mm  
包装(Packing): 530\*210\*530mm



### KX-D46

医生转椅

Doctor swivel chair

规格(Specifications): Φ410\*450/570mm  
包装(Packing): 630\*250\*630mm



### KX-D47

医生转椅

Doctor swivel chair

规格(Specifications): Φ410\*480/620mm  
包装(Packing): 630\*250\*630mm



### KX-D48

医生转椅

Doctor swivel chair

规格(Specifications): Φ410\*480/620mm  
包装(Packing): 630\*250\*630mm



### KX-D49

医生转椅

Doctor swivel chair

规格(Specifications): Φ450\*480/620mm  
包装(Packing): 630\*250\*630mm



### KX-D12

不锈钢手术凳 (四脚)

S.S. stool with four legs

规格(Specifications): Φ300\*460/650mm  
包装(Packing): 350\*350\*550mm 两个/包



### KX-D50

不锈钢手术凳 (三脚)

Stainless steel surgical stool (triple)

规格(Specifications): Φ300\*460/650mm  
包装(Packing): 350\*350\*550mm 两个/包



### KX-D15

医生座椅 (镀铬)

Doctors whirl stool

规格(Specifications): Φ320\*430/560mm  
包装(Packing): 460\*460\*460mm 两个/包



### KX-D13

手术转椅

Injection chair

规格(Specifications): Φ320\*430/560mm  
包装(Packing): 330\*330\*460mm 两个/包



### KX-D51

特制输液椅

Special infusion chair

规格(Specifications): L560\*W545\*H450/960mm  
包装(Packing): 590\*580\*990mm



### KX-D10

双层钢塑脚踏凳

Steel patient step(two)

规格(Specifications): L390\*W580\*H140/280mm  
包装(Packing): 410\*610\*450mm 两个/包

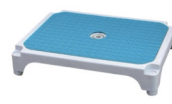


### KX-D10A

单层钢塑脚踏凳

Steel patient step(one)

规格(Specifications): L390\*W580\*H140mm  
包装(Packing): 420\*360\*190mm 两个/包



### KX-D52

工程塑料踏脚凳

Plastic step stool

规格(Specifications): L400\*W300\*H80mm



## 床垫系列

### Mattress Series



#### KX-P23

三折床垫  
Mattress for three sections

规格(Specifications): L1950\*W840\*H50/80mm  
包装(Packing): 1960\*850\*320mm(四件/包)



#### KX-P24

二折床垫  
Mattress for two sections

规格(Specifications): L1950\*W840\*H50/80mm  
包装(Packing): 1960\*850\*320mm(四件/包)



#### KX-P25

平板床垫  
Mattress flat

规格(Specifications): L1950\*W840\*H50/80mm  
包装(Packing): 1960\*850\*320mm(四件/包)



#### KX-P28

骨科床专用床垫  
Mattress for orthopaedics bed

规格(Specifications): L1850\*W840\*H50/80mm  
包装(Packing): 1860\*850\*320mm(四件/包)



#### KX-P27

防褥疮气垫 I 型  
I style air mattress

规格(Specifications): L1950\*W850\*H60mm  
包装(Packing): 705\*360\*360mm(三件/包)



#### KX-P27A

防褥疮气垫 II 型  
II style air mattress

规格(Specifications): L1950\*W850\*H60mm  
包装(Packing): 705\*360\*360mm(三件/包)



#### KX-P27B

防褥疮气垫 III 型  
III style air mattress

规格(Specifications): L1950\*W850\*H60mm  
包装(Packing): 705\*360\*360mm(三件/包)



#### KX-P27C

防褥疮气垫 IV 型  
IV style air mattress

规格(Specifications): L1950\*W850\*H60mm  
包装(Packing): 705\*360\*360mm(三件/包)



#### KX-Q22

不锈钢屏风  
Stainless steel screen

规格(Specifications):  
L500\*W2000\*H1750mm (四折)  
L500\*W1500\*H1750mm (三折)  
L500\*W1000\*H1750mm (二折)  
包装(Packing): 1700\*540\*100mm (四件)



#### KX-Q09

双棉槽脚踏开启架  
Foot control cupboard (double)

规格(Specifications): L700\*W400\*H800/1200mm  
包装(Packing): 730\*430\*1230mm



#### KX-Q09A

单棉槽脚踏开启架  
Foot control cupboard (single)

规格(Specifications): L400\*W400\*H800/1200mm  
包装(Packing): 460\*420\*810/1210mm



#### KX-Q17

钢架紫外线杀菌车  
Plastic UV sterilization car

规格(Specifications):  
L420\*W440\*H1150\*750mm  
包装(Packing):  
450\*470\*1200mm



#### KX-Q34

反光灯  
Reflector Lamp

规格(Specifications):  
1000\*1500mm  
包装(Packing):  
1030\*300\*120mm(两件/包)



#### KX-Q18

不锈钢手消毒液架  
Glove shelf

规格(Specifications):  
A. 64 号 B. 32 号  
包装(Packing):  
600\*450\*1500mm



#### KX-Q29

送检箱  
Stainless steel medicine box

规格(Specifications):  
L500\*W300\*H100/400mm  
包装(Packing):  
530\*330\*420mm



#### KX-Q30A

ABS病历夹  
ABS patient recorder

规格(Specifications):  
L230\*W315mm  
包装(Packing):  
350\*230\*250mm(二十件/包)

### Products For The Aged Series

## 老年用品系列



#### KX-D19A

可调式钢轮椅  
Steel wheelchair adjustable

规格(Specifications): L630\*W1280\*H490/1270mm  
包装(Packing): 950\*350\*900mm



#### KX-D905

轮椅  
Steel wheelchair

规格(Specifications): L930\*W650\*H880mm  
包装(Packing): 930\*230\*890mm



#### KX-D609

轮椅  
Steel wheelchair

规格(Specifications): L1160\*W630\*H1200mm  
包装(Packing): 950\*340\*930mm



#### KX-D905A

带便桶轮椅  
Steel commode wheelchair

规格(Specifications): L800\*W580\*H900mm  
包装(Packing): 760\*290\*890mm



#### KX-D862L

助步器  
Hemi deluxe aluminum roller

规格(Specifications):  
L640\*W610\*H710~820mm  
包装(Packing): 630\*230\*800mm



#### KX-D55

洗澡椅  
Bath chair

规格(Specifications):  
L500\*W400\*H400/520mm  
包装(Packing): 640\*520\*530mm (两件)



#### KX-D55A

靠背洗澡椅  
Bath chair with backrest

规格(Specifications):  
L500\*W400\*H400/520mm  
包装(Packing): L630\*W510\*H530mm (四件)



#### KX-D55B

可移动坐便器  
Commode wheelchair

规格(Specifications):  
L550\*W450\*H480/840mm(实物)  
包装(Packing): 500\*200\*380mm



#### KX-DP08

铝合金轮椅坐便椅  
Aluminum alloy commode chair

规格(Specifications):  
L920\*W580\*H940mm  
包装(Packing): 1000\*225\*605mm



#### KX-D55C

坐便器  
Commode chair

规格(Specifications):  
L460\*W360\*H430/750mm  
包装(Packing): 930\*230\*600mm  
290\*290\*33mm



#### KX-D55E

坐便器  
Commode chair

规格(Specifications):  
L360\*W360\*H430/750mm  
包装(Packing): 690\*230\*380mm



#### KX-D55D

坐便器  
Commode chair

规格(Specifications):  
L360\*W360\*H430/750mm  
包装(Packing): 800\*380\*400mm



#### KX-D616

坐便器  
Commode chair

规格(Specifications):  
L510\*W550\*H740/840mm  
包装(Packing): 530\*210\*770mm



#### KX-D616A

铝合金坐便器  
Aluminum alloy commode chair

规格(Specifications):  
L500\*W400\*H630mm  
包装(Packing): 530\*430\*660mm



#### KX-Q20

带轮助行器  
Aluminum walker with castors

规格(Specifications):  
L600\*W500\*H780/940mm (实物)  
包装(Packing):  
L580\*W180\*H790 (两件)



#### KX-D20A

固定助行器  
Aluminum walker

规格(Specifications):  
L600\*W500\*H780/960mm (实物)  
包装(Packing):  
L580\*W180\*H790mm (两件)



#### KX-D20B

助行器  
Walker

规格(Specifications):  
L520\*W600\*H820~920mm (实物)  
包装(Packing):  
L600\*W350\*H930mm (两件)



#### KX-D836

拐杖  
Crutch

规格(Specifications): H845mm  
包装(Packing):  
860\*300\*410mm (10支/箱)



#### KX-D832-1-8

拐杖  
Cane series

规格(Specifications): H700~930mm  
包装(Packing):  
660\*170\*290mm (20支/箱)

## 医用配件系列

### Ancillary Equipment For Care Bed Series



#### KX-P71

全ABS伸缩式餐板  
ABS flexible over bed table  
规格(Specifications): L870\*W350\*H25mm  
包装(Packing): 880\*370\*290 十个/包



#### KX-P73

ABS一体成型餐板  
ABS molding plate  
规格(Specifications): 1020\*300\*30mm  
(高度不含挂杆)



#### KX-P72

全ABS弧形伸缩式餐板  
ABS arc-shaped flexible over bed table  
规格(Specifications): L900\*W400\*H25mm  
包装(Packing): 935\*315\*116 六个/包



#### KX-P73A

天蓝色固定餐板  
ABS flexible over bed table (sky blue)  
规格(Specifications): L1000\*W300mm  
包装(Packing): 1010\*90\*320 两个/包



#### KX-P74

双面豪华脚轮  
Double-face deluxe castor  
规格(Specifications): Φ125mm  
包装(Packing): 460\*270\*280 十六个/箱



#### KX-P75

豪华中控脚轮  
Deluxe central locked system castor  
规格(Specifications): Φ125mm  
包装(Packing): 460\*270\*280 十六个/箱



#### KX-P76

聚酰胺脚轮  
Normal castor  
规格(Specifications): Φ125mm  
包装(Packing): 460\*270\*280 十六个/箱



#### KX-P77

豪华脚轮  
Deluxe castor  
规格(Specifications): Φ75mm Φ100mm Φ125mm  
包装(Packing): 460\*270\*280 十六个/箱



#### KX-P81

婴儿盆  
Baby basin  
规格(Specifications): L810\*W460\*H250mm



#### KX-DA-7

U型天轨输液架  
U-day rail infusion stand  
材质(Material): 铝合金 Aluminum alloy  
规格(Specifications): 1800mm\*900mm



#### KX-DA-9

天轨输液架  
Sky rail infusion stand  
材质(Material): 不锈钢 Stainless Steel  
规格(Specifications): 外(outer) 16mm、内(inside) 13mm



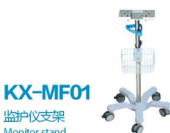
#### KX-F01

高级泵架输液架  
Senior pump infusion rack  
材质(Material): 底座不锈钢 Base stainless steel  
规格(Specifications): 底座(bottom tube) 32mm、高度 1.5-2m



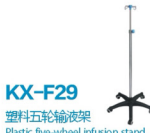
#### KX-A03

三角带灯反光灯  
Triangle pulley lights  
材质(Material): 底座生铁 Base pig iron  
规格(Specifications): 底座(bottom tube) 32mm、高度 1.4-1.6m



#### KX-MF01

监护仪支架  
Monitor stand  
材质(Material): 平台钛镁合金 Platform titanium magnesium alloy  
铸铝喷涂底座 Cast steel paint base  
规格(Specifications): 平台 2712\*7cm 底座直径 50cm  
外(outer) Φ38mm、内(inside) Φ32mm、



#### KX-F29

塑料五轮输液架  
Plastic five-wheel infusion stand  
材质(Material): 塑料底座 Plastic base  
规格(Specifications): 外(outer) Φ25mm、内(inside) Φ16mm、底座直径 56mm、高度 1.1-2.1m



#### KX-L05-3

落地输液架  
Floor infusion stand  
材质(Material): 底座生铁 Base pig iron  
规格(Specifications): 外(outer) Φ25mm、内(inside) Φ19mm、高度 1.1-2.1m



#### KX-L3-4

落地输液架  
Floor infusion stand  
材质(Material): 底座生铁 Base pig iron  
规格(Specifications): 外(outer) Φ25mm、内(inside) Φ19mm、高度 1.1-2.1m



#### KX-L03-3

落地输液架  
Floor infusion stand  
材质(Material): 底座生铁 Base pig iron  
规格(Specifications): 外(outer) Φ25mm、内(inside) Φ19mm、高度 1.1-2.1m



#### KX-LK

不锈钢三角输液架  
Stainless steel triangle infusion stand  
材质(Material): 底座不锈钢 Base stainless steel  
规格(Specifications): 外(outer) Φ25mm、内(inside) Φ19mm、底座直径 45cm、高度 1.1-2.1m



#### KX-Q82

伸缩输液架  
Flexible V-stand  
规格(Specifications): ΦL19\*W120mm  
包装(Packing): 1000\*160\*160 十个/包



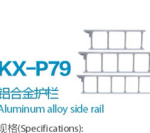
#### KX-Q83

喷雾蚊帐架  
Steel mosquito netting shelf  
规格(Specifications): ΦL15\*W120mm  
包装(Packing): 1230\*120\*120 十六个/包



#### KX-K01

顶丝式床头杆  
Top wire bed head bar  
材质(Material): 不锈钢管材、配件ABS  
规格(Specifications): 外(outer) Φ19mm、内(inside) Φ16mm、高度 95-175cm



#### KX-P79

铝合金护栏  
Aluminum alloy side rail  
规格(Specifications): L960/L1220/L1480\*W420mm



#### KX-P87

PP护栏  
PP fence  
规格(Specifications): L1050\*W380mm (1)  
L1080\*W305mm (2)



#### KX-P87A

PP护栏  
PP fence  
规格(Specifications): L720\*W300mm



#### KX-P88

护栏  
PP fence  
规格(Specifications): L1330\*W560mm



#### KX-P92

过床易  
Bedside easy  
规格(Specifications): 1800\*500\*10mm  
包装(Packing): 920\*520\*40mm



#### KX-P78C

直插式床头尾  
Head and foot board  
规格(Specifications): 950\*430mm  
包装(Packing): 980\*460mm



#### KX-P78A

外挂式床头尾  
Head and foot board  
规格(Specifications): 950\*530\*430mm  
包装(Packing): 980\*560mm



#### KX-P78B

八乐梦歌床头尾  
Head and foot board  
规格(Specifications): 900\*540\*70mm  
包装(Packing): 930\*570mm



#### KX-P90A

复合床头尾板  
Composite bed tail plate  
规格(Specifications): 1000\*490\*60mm  
外挂式(Plug-in): 705mm  
内挂式(Hanging inside): 835mm



#### KX-P90B

扁管床头尾板  
Flat tube tail plate  
规格(Specifications): 800\*500\*65mm  
内挂式(Hanging inside): 710mm



#### KX-P90C

带防撞轮复合床头尾  
Compound tail end with anti-collision wheel  
外挂式(Plug-in): 905mm  
内挂式(Hanging inside): 815mm



#### KX-P90D

带防撞轮复合床头尾  
Compound tail end with anti-collision wheel  
规格(Specifications): L865\*W455mm (1)  
L920\*W500mm (2)



#### KX-P90E

复合床头尾板  
Composite bed tail plate  
规格(Specifications): L930\*W500mm



#### KX-P90F

床头尾板  
Bed headboard  
规格(Specifications): 930\*550\*65mm  
外挂式(Plug-in): 705mm  
内挂式(Hanging inside): 835mm



#### KX-P90G

床头尾板  
Bed headboard  
规格(Specifications): 1000\*510\*65mm  
外挂式(Plug-in): 705mm  
内挂式(Hanging inside): 835mm



#### KX-P91A

床尾板  
Foot board  
规格(Specifications): 床头(Bedside) W910\*H800mm  
床尾(Bed foot) W910\*H830mm



#### KX-P91B

床尾板  
Foot board  
规格(Specifications): 床头(Bedside) W910\*H800mm  
床尾(Bed foot) W910\*H830mm



#### KX-P91C

床尾板  
Foot board  
规格(Specifications): 床头(Bedside) W910\*H800mm  
床尾(Bed foot) W910\*H830mm



#### KX-P91D

床尾板  
Foot board  
规格(Specifications): 床头(Bedside) W910\*H800mm  
床尾(Bed foot) W910\*H830mm